

Recombinant Human SLC6A4 Protein, Myc/DDK-tagged, C13 and N15-labeled

Cat. No. SLC6A4-1099H **Lot. No.** (See product label)

SPECIFICATION

Product Overview	SLC6A4 MS Standard C13 and N15-labeled recombinant protein (NP_001036) with a C-terminal MYC/DDK tag, was expressed in HEK293 cells.
Species	Human
Source	HEK293
Description	<p>This gene encodes an integral membrane protein that transports the neurotransmitter serotonin from synaptic spaces into presynaptic neurons. The encoded protein terminates the action of serotonin and recycles it in a sodium-dependent manner.</p> <p>This protein is a target of psychomotor stimulants, such as amphetamines and cocaine, and is a member of the sodium:neurotransmitter symporter family. A repeat length polymorphism in the promoter of this gene has been shown to affect the rate of serotonin uptake. There have been conflicting results in the literature about the possible effect, if any, that this polymorphism may play in behavior and depression.</p>
Molecular Mass	70.1 kDa
AA Sequence	<p>METTPLNSQKQLSACEDGEDCQENGLQKVVPTPGDKVESGQISNGYSAVPSPGA GDDTRHSIPATTTTLVAELHQGERETWGKKVDFLLSVIGYAVDLGNVWRFPYICYQN GGGAFLLPYTIMAIFGGIPLFYMELALGQYHRNGCISIWKRKICPIFKGIGYAICIIAFYIAS YYNTIMAWALYYLISSFTDQLPWTSCKNSWNTGNCTNYFSEDNITWTLHSTSPAEEF YTRHVLQIHRSKGLQDLGGISWQLALCIMLIFTVIYFSIWKGVKTSKGKVVWVTATFPYII</p>

 Tel: 1-631-559-9269 1-516-512-3133

 Email: info@creative-biomart.com  Fax: 1-631-938-8127

 45-1 Ramsey Road, Shirley, NY 11967, USA

LSVLLVRGATLPGAWRGVLFYKPNWQKLEETGVWIDAAAQIFFSLGPGFGVLLAFA
 SYNKFNNNCYQDALVTSVVNCMTSFVSGFVIFTVLGYMAEMRNEDVSEVAKDAGPS
 LLFITYAEAIANMPASTFFAIFFLMLITLGLDSTFAGLEGVITAVLDEFPHVWAKRRER
 FVLAVVITCFFGSLVTLTFGGAYVVKLLEEYATGPAVLTVLIEAVAVSWFYGITQFCR
 DVKEMLGFSFGWFWRICWVAISPLFLLFIICSFLMSPQLRLFQYNYPYWSIILGYCIG
 TSSFICIPTYIAYRLIITPGTFKERIISITPETPTEIPCGDIRLNAVTRTRPLEQKLISEED
 LAANDILDYKDDDDKV

Purity > 80% as determined by SDS-PAGE and Coomassie blue staining

Stability Stable for 3 months from receipt of products under proper storage and handling conditions.

Storage Store at -80 centigrade. Avoid repeated freeze-thaw cycles.

Concentration 50 µg/mL as determined by BCA

Storage Buffer 100 mM glycine, 25 mM Tris-HCl, pH 7.3.

GENE INFORMATION

Gene Name [SLC6A4 solute carrier family 6 member 4 \[Homo sapiens \(human\) \]](#)

Official Symbol [SLC6A4](#)

Synonyms SLC6A4; solute carrier family 6 (neurotransmitter transporter, serotonin), member 4; HTT; sodium-dependent serotonin transporter; 5-HTT; SERT1; 5HT transporter; 5-hydroxytryptamine transporter; solute carrier family 6 member 4; Na⁺/Cl⁻ dependent serotonin transporter; 5HTT; OCD1; SERT; 5-HTT; hSERT; 5-HTTLPR;

Gene ID [6532](#)

 Tel: 1-631-559-9269 1-516-512-3133

 Email: info@creative-biomart.com  Fax: 1-631-938-8127

 45-1 Ramsey Road, Shirley, NY 11967, USA

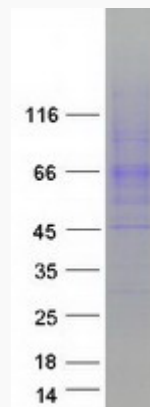
mRNA Refseq [NM_001045](#)

Protein Refseq [NP_001036](#)

MIM [182138](#)

UniProt ID [P31645](#)

SDS-PAGE



 Tel: 1-631-559-9269 1-516-512-3133

 Email: info@creative-biomart.com  Fax: 1-631-938-8127

 45-1 Ramsey Road, Shirley, NY 11967, USA