

Active Recombinant Full Length Human SLC6A4 Protein, C-Flag-tagged

Cat. No. SLC6A4-601HFL **Lot. No.** (See product label)

SPECIFICATION

Product Overview	Recombinant Full Length Human SLC6A4 Protein, fused to Flag-tag at C-terminus, was expressed in Mammalian cells.
Species	Human
Source	Mammalian Cells
Description	<p>This gene encodes an integral membrane protein that transports the neurotransmitter serotonin from synaptic spaces into presynaptic neurons. The encoded protein terminates the action of serotonin and recycles it in a sodium-dependent manner.</p> <p>This protein is a target of psychomotor stimulants, such as amphetamines and cocaine, and is a member of the sodium:neurotransmitter symporter family. A repeat length polymorphism in the promoter of this gene has been shown to affect the rate of serotonin uptake. There have been conflicting results in the literature about the possible effect, if any, that this polymorphism may play in behavior and depression.</p>
Form	25 mM Tris HCl, pH 7.3, 100 mM glycine, 10% glycerol.
Bio-activity	WB standard
Molecular Mass	70.1 kDa
AA Sequence	METTPLNSQKQLSACEDGEDCQENGLQKVVPTPGDKVESGQISNGYS AVPSPGA GDDTRHSIPATTTTL VAEHQGERETWGKKVDFLLSVIGYAVDLGNVWRFPIICYQ

 Tel: 1-631-559-9269 1-516-512-3133

 Email: info@creative-biomart.com  Fax: 1-631-938-8127

 45-1 Ramsey Road, Shirley, NY 11967, USA



NGGGAFLLPYTIMAIFGGIPLFYMELALG QYHRNGCISIWKRKICPIFKGIGYAICIIAFYI
 ASYYNTIMAWALYYLISSFTDQLPWTSCKNSWNTGNCT NYFSEDNITWTLHSTSPA
 EEFYTRHVLQIHRKGLQDLGGISWQLALCIMLIFTVIYFSIWKGVKTSQKV VVWTAT
 FPYIILSVLLVRGATLPGAWRGVLFYLKPNWQKLLLETGVWIDAAAQIFFSLGPGFGVL
 LAFASY NKFNNNCYQDALVTSVNCMTSFVSGFVIFTVLGYMAEMRNEDVSEVAKD
 AGPSLLFITYAEAIANMPAS TFFAIIFLMLITLGLDSTFAGLEGVITAVLDEFPHVWAK
 RRERFVLAVVITCFFGSLVTLTFGGAYVVK LLEEYATGPAVLTVALIEAVAVSWFYGI
 TQFCRDVKEMLGFSPGWFWRICWVAISPLFLLFIICSFLMSP PQLRFLQYNYPYWSII
 LGYCIGTSSFICIPYIAYRLIITPGTFKERIISITPETPTEIPCGDIRLNAVTRTRPLEQK
 LISEEDLAANDILDYKDDDDKV

Purity

> 80% as determined by SDS-PAGE and Coomassie blue staining.

Stability

Stable for 12 months from the date of receipt of the product under proper storage and handling conditions. Avoid repeated freeze-thaw cycles.

Storage

Store at -80 centigrade.

Concentration

>50 ug/mL as determined by microplate BCA method.

Preparation

Recombinant protein was captured through anti-DDK affinity column followed by conventional chromatography steps.

Protein Families

Druggable Genome, Transmembrane

Full Length

Full L.

GENE INFORMATION

Gene Name

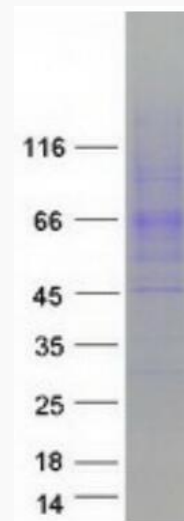
SLC6A4 solute carrier family 6 member 4 [Homo sapiens (human)]

Tel: 1-631-559-9269 1-516-512-3133

Email: info@creative-biomart.com Fax: 1-631-938-8127

45-1 Ramsey Road, Shirley, NY 11967, USA

Official Symbol	SLC6A4
Synonyms	HTT; 5HTT; OCD1; SERT; 5-HTT; SERT1; hSERT; 5-HTTLPR
Gene ID	6532
mRNA Refseq	NM_001045.6
Protein Refseq	NP_001036.1
MIM	182138
UniProt ID	P31645



Coomassie blue staining of purified SLC6A4 protein.

 Tel: 1-631-559-9269 1-516-512-3133

 Email: info@creative-biomart.com  Fax: 1-631-938-8127

 45-1 Ramsey Road, Shirley, NY 11967, USA