

## Recombinant Human SLC6A9 Protein, GST-tagged

**Cat. No.** SLC6A9-26H    **Lot. No.** (See product label)

### SPECIFICATION

<b>Product Overview</b>	Recombinant Human SLC6A9 Protein(209-285 aa), fused with N-terminal GST tag, was expressed in E. coli.
<b>Species</b>	Human
<b>Source</b>	E.coli
<b>ProteinLength</b>	209-285 aa
<b>Form</b>	The purified protein was Lyophilized from sterile PBS (58mM Na <sub>2</sub> HPO <sub>4</sub> , 17mM NaH <sub>2</sub> PO <sub>4</sub> , 68mM NaCl, pH8.). 5 % trehalose and 5 % mannitol are added as protectant before lyophilization. The elution buffer contain 100mM GSH.
<b>Storage</b>	Short-term storage: Store at 2-8°C for (1-2 weeks). Long-term storage: Aliquot and store at -20°C to -80°C for up to 3 months, reconstitution with sterile water and addition of an equal volume of glycerol. Avoid repeat freeze-thaw cycles.
<b>AA Sequence</b>	SSMTHVLPWAYCNPWNTHDCAGVLDASNLNNGSRPAALPSNLSHLLNHSLQRTS PSEEYWRLYVLKLSDDIGNFGE
<b>Purity</b>	85%, by SDS-PAGE with Coomassie Brilliant Blue staining.

### GENE INFORMATION

<b>Official Symbol</b>	SLC6A9
------------------------	--------

 Tel: 1-631-559-9269    1-516-512-3133

 Email: [info@creative-biomart.com](mailto:info@creative-biomart.com)     Fax: 1-631-938-8127

 45-1 Ramsey Road, Shirley, NY 11967, USA

**Synonyms** SLC6A9; solute carrier family 6 (neurotransmitter transporter, glycine), member 9; sodium- and chloride-dependent glycine transporter 1; GLYT1; glyT-1; solute carrier family 6 member 9; DKFZp547A1118;

**Gene ID** 6536

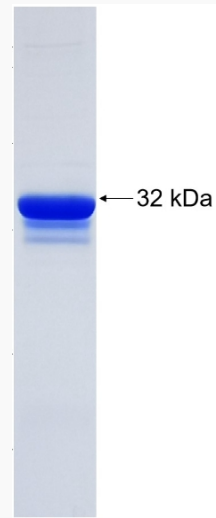
**mRNA Refseq** NM\_001024845


**Protein Refseq** NP\_001020016

**MIM** 601019


**UniProt ID** P48067

**SDS-PAGE**



 Tel: 1-631-559-9269 1-516-512-3133

 Email: [info@creative-biomart.com](mailto:info@creative-biomart.com)  Fax: 1-631-938-8127

 45-1 Ramsey Road, Shirley, NY 11967, USA