

## Recombinant Human CLDN18 Full Length Transmembrane protein(VLPs), FITC labeled

Cat. No. SLC7A1-2322H Lot. No. (See product label)

### SPECIFICATION

<b>Product Overview</b>	FITC labeled Recombinant Human CLDN18 Full Length Transmembrane protein(VLPs)(P30825)(Met1-Lys629) was expressed in HEK293.
<b>Species</b>	Human
<b>Source</b>	HEK293
<b>ProteinLength</b>	Met1-Lys629
<b>Tag</b>	Non
<b>Conjugation/Label</b>	FITC
<b>Form</b>	Supplied as 0.22 um filtered solution in PBS, 150mM L-Arginine (pH 7.4).
<b>Molecular Mass</b>	The target protein has a predicted MW of 70.20 kDa.
<b>Endotoxin</b>	Less than 1EU per ug by the LAL method.
<b>Purity</b>	> 95% as determined by HPLC
<b>Storage</b>	Valid for 12 months from date of receipt when stored at -80°C.; Recommend to aliquot the protein into smaller quantities for optimal storage. Please minimize freeze-thaw cycles.

 Tel: 1-631-559-9269 1-516-512-3133

 Email: [info@creative-biomart.com](mailto:info@creative-biomart.com)  Fax: 1-631-938-8127

 45-1 Ramsey Road, Shirley, NY 11967, USA

**Reconstitution** It is recommended that sterile water be added to the vial to prepare a stock solution of 0.2 ug/ul. Centrifuge the vial at 4°C before opening to recover the entire contents.

**Conjugation** FITC

## GENE INFORMATION

**Gene Name** SLC7A1 solute carrier family 7 (cationic amino acid transporter, y+ system), member 1 [ Homo sapiens ]

**Official Symbol** SLC7A1

**Synonyms** SLC7A1; solute carrier family 7 (cationic amino acid transporter, y+ system), member 1; ATRC1, ERR; high affinity cationic amino acid transporter 1; amino acid transporter; cationic 1; CAT 1; ecotropic retroviral receptor; HCAT1; REC1L; CAT1; solute carrier family 7 member 1; amino acid transporter, cationic 1; ecotropic retrovirus receptor homolog; system Y+ basic amino acid transporter; ecotropic retroviral leukemia receptor homolog; ERR; ATRC1; CAT-1;

**Gene ID** 6541

**mRNA Refseq** NM\_003045

**Protein Refseq** NP\_003036

**MIM** 104615

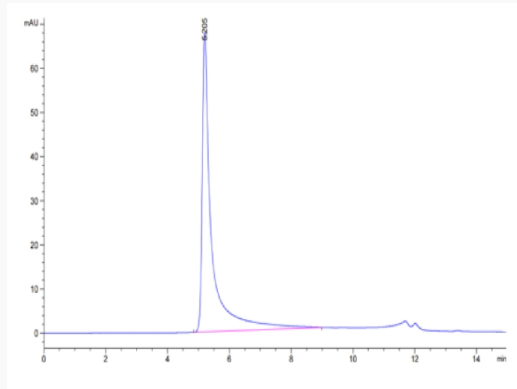
**UniProt ID** P30825

 Tel: 1-631-559-9269 1-516-512-3133

 Email: [info@creative-biomart.com](mailto:info@creative-biomart.com)  Fax: 1-631-938-8127

 45-1 Ramsey Road, Shirley, NY 11967, USA

SEC-HPLC



 Tel: 1-631-559-9269 1-516-512-3133

 Email: [info@creative-biomart.com](mailto:info@creative-biomart.com)  Fax: 1-631-938-8127

 45-1 Ramsey Road, Shirley, NY 11967, USA