

## Recombinant Mouse SLC7A10 Protein, His-tagged

Cat. No. SLC7A10-2249M Lot. No. (See product label)

### SPECIFICATION

<b>Product Overview</b>	Recombinant Mouse SLC7A10 Protein is produced by Yeast expression system. This protein is fused with a 6xHis tag at the N-terminal. Protein Description: Partial.
<b>Species</b>	Mouse
<b>Source</b>	Yeast
<b>Description</b>	Sodium-independent, high affinity transport of small neutral D- and L-amino acids and amino acid-related compounds. May play a role in the modulation of glutamatergic transmission through mobilization of D-serine at the glutamatergic synapse.
<b>Form</b>	Tris-based buffer,50% glycerol
<b>Molecular Mass</b>	22.5 kDa
<b>Purity</b>	> 90% as determined by SDS-PAGE.
<b>Notes</b>	Repeated freezing and thawing is not recommended. Store working aliquots at 4 centigrade for up to one week.
<b>Storage</b>	The shelf life is related to many factors, storage state, buffer ingredients, storage temperature and the stability of the protein itself. Generally, the shelf life of liquid form is 6 months at -20 centigrade/-80 centigrade. The shelf life of lyophilized form is 12 months at -20 centigrade/-80 centigrade.

 Tel: 1-631-559-9269 1-516-512-3133

 Email: [info@creative-biomart.com](mailto:info@creative-biomart.com)  Fax: 1-631-938-8127

 45-1 Ramsey Road, Shirley, NY 11967, USA

**Concentration** A hardcopy of COA will be sent along with the products. Please refer to it for detailed information.

## GENE INFORMATION

**Gene Name** Slc7a10 solute carrier family 7 (cationic amino acid transporter, y+ system), member 10 [ *Mus musculus* ]

**Official Symbol** [SLC7A10](#)

**Synonyms** Asc-1; AL024237; D7Bwg0847e;

**Gene ID** [53896](#)

**mRNA Refseq** [NM\\_017394.4](#)

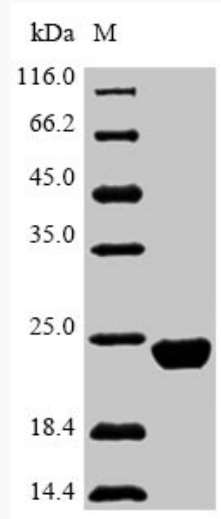
**Protein Refseq** [NP\\_059090.3](#)

**UniProt ID** [P63115](#)

 Tel: 1-631-559-9269 1-516-512-3133

 Email: [info@creative-biomart.com](mailto:info@creative-biomart.com)  Fax: 1-631-938-8127

 45-1 Ramsey Road, Shirley, NY 11967, USA



(Tris-Glycine gel) Discontinuous SDS-PAGE (reduced) with 5% enrichment gel and 15% separation gel.

 Tel: 1-631-559-9269 1-516-512-3133

 Email: [info@creative-biomart.com](mailto:info@creative-biomart.com)  Fax: 1-631-938-8127

 45-1 Ramsey Road, Shirley, NY 11967, USA