

Recombinant Full Length Human SLC7A5 Protein, GST Tagged

Cat. No. SLC7A5-22HFL Lot. No. (See product label)

SPECIFICATION

Species	Human
Source	Wheat Germ (in vitro)
ProteinLength	1-507 aa
Description	Enables L-amino acid transmembrane transporter activity and secondary active transmembrane transporter activity. Involved in carboxylic acid transport; thyroid hormone transport; and xenobiotic transport. Located in several cellular components, including apical plasma membrane; cytosol; and microvillus membrane. Part of amino acid transport complex. Implicated in cholangiocarcinoma; colon cancer; hepatocellular carcinoma; and lung squamous cell carcinoma. Biomarker of esophagitis; gastrointestinal system cancer (multiple); malignant astrocytoma (multiple); and respiratory system cancer (multiple).
Molecular Mass	81.40000000000001 kDa
AA Sequence	MAGAGPKRRALAAPAAEEKEEAREKMLAAKSADGSAPAGEGEGVTLQRNITLLNGV AIIVGTIIGSGIFVTPTGVLKEAGSPGLALVVAACGVFSIVGALCYAELGTTISKSGGD YAYMLEVYGSLPAFLKLLWIELLIIRPSSQYIVALVFATYLLKPLFPTCPVPEEAAKLVAC LCVLLLTAVNCYSVKAATRVQDAFAAAKLLALALIILLGFVQIGKGDVSNLDPNFSFEG TKLDVGNIVLALYSGLFAYGGWNYLNFVTEEMINPYRNLPLAIIISLPIVTLVYVLTNLA YFTTLSTEQMLSSEAVAVDFGNHYHLGVMSWIIPVVFVGLSCFGSVNGSLFTSSRLFFV GSREGHLPSILSMIHPQLLTPVPSLVFTCVMTLLYAFSKDIFSVINFFSFFNWLCVALAI

 Tel: 1-631-559-9269 1-516-512-3133

 Email: info@creative-biomart.com  Fax: 1-631-938-8127

 45-1 Ramsey Road, Shirley, NY 11967, USA



IGMIWLRHRKPELERPIKVNALPVFFILACLFLIAVSFWKTPVECGIGFTIILSGLPVYF
FGVWWWKNKPKWLLQGIFSTTVLCQKLMQVVPQET

Quality Control Testing

12.5% SDS-PAGE Stained with Coomassie Blue

Applications

Enzyme-linked Immunoabsorbent Assay Western Blot (Recombinant protein)
Antibody Production Protein Array

Notes

Best use within three months from the date of receipt of this protein.

Storage

Store at -80 centigrade. Aliquot to avoid repeated freezing and thawing.

Storage Buffer

50 mM Tris-HCl, 10 mM reduced Glutathione, pH=8.0 in the elution buffer.

GENE INFORMATION

Gene Name

SLC7A5 solute carrier family 7 member 5 [Homo sapiens (human)]

Official Symbol

SLC7A5

Synonyms

SLC7A5; solute carrier family 7 member 5; E16; CD98; LAT1; 4F2LC; MPE16; D16S469E; large neutral amino acids transporter small subunit 1; 4F2 light chain; CD98 light chain; L-type amino acid transporter 1; integral membrane protein E16; sodium-independent neutral amino acid transporter LAT1; solute carrier family 7 (amino acid transporter light chain, L system), member 5; solute carrier family 7 (cationic amino acid transporter, y+ system), member 5

Gene ID

8140

mRNA Refseq

NM_003486

Tel: 1-631-559-9269 1-516-512-3133

Email: info@creative-biomart.com Fax: 1-631-938-8127

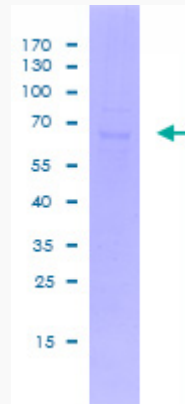
45-1 Ramsey Road, Shirley, NY 11967, USA

Protein Refseq NP_003477

MIM 600182

UniProt ID Q96QB2

SDS-PAGE



 Tel: 1-631-559-9269 1-516-512-3133

 Email: info@creative-biomart.com  Fax: 1-631-938-8127

 45-1 Ramsey Road, Shirley, NY 11967, USA