

## Recombinant Human SLC7A9 Protein, GST-tagged

Cat. No. SLC7A9-662H Lot. No. (See product label)

### SPECIFICATION

<b>Product Overview</b>	Recombinant Human SLC7A9 Full-Length ORF Protein (1-487 aa) is produced by Wheat Germ (in vitro) expression system. This protein is fused with a GST tag at the N-terminal.
<b>Species</b>	Human
<b>Source</b>	Wheat Germ
<b>ProteinLength</b>	1-487 aa
<b>Description</b>	This gene encodes a protein that belongs to a family of light subunits of amino acid transporters. This protein plays a role in the high-affinity and sodium-independent transport of cystine and neutral and dibasic amino acids, and appears to function in the reabsorption of cystine in the kidney tubule. Mutations in this gene cause non-type I cystinuria, a disease that leads to cystine stones in the urinary system due to impaired transport of cystine and dibasic amino acids. Two transcript variants, which encode the same protein, have been found for this gene.
<b>Form</b>	50 mM Tris-HCl, 10 mM reduced Glutathione, pH=8.0 in the elution buffer.
<b>Molecular Mass</b>	79.9 kDa
<b>AA Sequence</b>	MGDTGLRKRREDEKSIQSQEPKTTSLQKELGLISGISIIVGTIIGSGIFVSPKSVLSNTE AVGPCLIIWAACGVLATLALGALCFELGTMITKSGGEYPYLMEAYGPIPAYLFSWASLI VIKPTSFALICLSFSEYVCAPFYVGCKPPQIVVKCLAAAAILFISTVNSLSVRLGYSYVQNI

 Tel: 1-631-559-9269 1-516-512-3133

 Email: [info@creative-biomart.com](mailto:info@creative-biomart.com)  Fax: 1-631-938-8127

 45-1 Ramsey Road, Shirley, NY 11967, USA



FTAAKLVIVAIISGLVLLAQGNTKNFDNSFEGAQLSVGAISLAFYNGLWAYDGWNQL  
NYITEELRNPYRNLPLAIIIGIPLVTACYILMNVSYFTVMTATELLQSQAVAVTFGDRVL  
YPASWIVPLFVAFSTIGAANGTCFTAGRLIYVAGREGHMLKVLSYISVRRLTPAPAIIF  
YGIATIYIIPGDINSLVNYFSFAAWLFYGLTILGLIVMRFRTRKELERPIKVPVVIPVLMTLI  
SVFLVLAPIISKPTWEYLYCVLFILSGLLFYFLFVHYKFGWAQKISKPITMHLQMLMEV  
VPPEEDPE

**Applications**

Enzyme-linked Immunoabsorbent Assay; Western Blot (Recombinant protein);  
Antibody Production; Protein Array

**Notes**

Best use within three months from the date of receipt of this protein

**Storage**

Store at -80 centigrade. Aliquot to avoid repeated freezing and thawing.

**GENE INFORMATION**

**Gene Name**

SLC7A9 solute carrier family 7 member 9 [ Homo sapiens (human) ]

**Official Symbol**

SLC7A9

**Synonyms**

BAT1; CSNU3; FLJ94301;

**Gene ID**

11136

**mRNA Refseq**

NM\_014270

**Protein Refseq**

NP\_055085

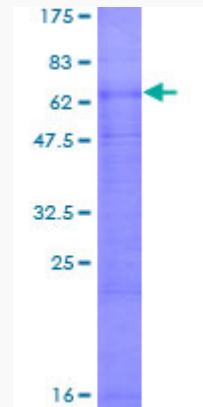
**UniProt ID**

P82251

Tel: 1-631-559-9269 1-516-512-3133

Email: [info@creative-biomart.com](mailto:info@creative-biomart.com) Fax: 1-631-938-8127

45-1 Ramsey Road, Shirley, NY 11967, USA



12.5% SDS-PAGE Stained with Coomassie Blue.

 Tel: 1-631-559-9269 1-516-512-3133

 Email: [info@creative-biomart.com](mailto:info@creative-biomart.com)  Fax: 1-631-938-8127

 45-1 Ramsey Road, Shirley, NY 11967, USA