

Recombinant Human SLC8A1 Protein (396-627 aa), His-tagged

Cat. No. SLC8A1-2278H Lot. No. (See product label)

SPECIFICATION

Product Overview	Recombinant Human SLC8A1 Protein (396-627 aa) is produced by Yeast expression system. This protein is fused with a 6xHis tag at the N-terminal. Protein Description: Partial.
Species	Human
Source	Yeast
ProteinLength	396-627 aa
Description	Mediates the exchange of one Ca ²⁺ ion against three to four Na ⁺ ions across the cell membrane, and thereby contributes to the regulation of cytoplasmic Ca ²⁺ levels and Ca ²⁺ -dependent cellular processes (PubMed:1374913, PubMed:11241183, PubMed:1476165). Contributes to Ca ²⁺ transport during excitation-contraction coupling in muscle. In a first phase, voltage-gated channels mediate the rapid increase of cytoplasmic Ca ²⁺ levels due to release of Ca ²⁺ stores from the endoplasmic reticulum. SLC8A1 mediates the export of Ca ²⁺ from the cell during the next phase, so that cytoplasmic Ca ²⁺ levels rapidly return to baseline. Required for normal embryonic heart development and the onset of heart contractions.
Form	Tris-based buffer,50% glycerol
Molecular Mass	27.4 kDa
AA Sequence	VNTEVTENDPVS KIFFEQGTYQCLENCGTVALTIIRRGDDLNTVFVDFRTE DGTANA

 Tel: 1-631-559-9269 1-516-512-3133

 Email: info@creative-biomart.com  Fax: 1-631-938-8127

 45-1 Ramsey Road, Shirley, NY 11967, USA

GSDYEFTEGTVVFKPGDTQKEIRVGIIDDDIFEEDENFLVHLSNVKVSSEASEDGILEA
 NHVSTLACLGPSTATVTIFDDDHAGIFTFEFPVTHVSESIGIMEVKVLR TSGARGNVI
 VPKYKIEGTARGGGEDFEDTCGELEFQND EIVKTISVKVIDDEEYEKNKTF FLEIG

Purity > 90% as determined by SDS-PAGE.

Notes Repeated freezing and thawing is not recommended. Store working aliquots at 4 centigrade for up to one week.

Storage The shelf life is related to many factors, storage state, buffer ingredients, storage temperature and the stability of the protein itself. Generally, the shelf life of liquid form is 6 months at -20 centigrade/-80 centigrade. The shelf life of lyophilized form is 12 months at -20 centigrade/-80 centigrade.

Concentration A hardcopy of COA will be sent along with the products. Please refer to it for detailed information.

GENE INFORMATION

Gene Name [SLC8A1 solute carrier family 8 \(sodium/calcium exchanger\), member 1 \[Homo sapiens \]](#)

Official Symbol [SLC8A1](#)

Synonyms NCX1;

Gene ID [6546](#)

mRNA Refseq [NM_021097.2](#)

Protein Refseq [NP_066920.1](#)

 Tel: 1-631-559-9269 1-516-512-3133

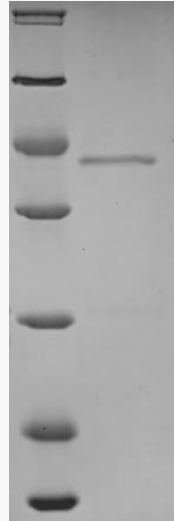
 Email: info@creative-biomart.com  Fax: 1-631-938-8127

 45-1 Ramsey Road, Shirley, NY 11967, USA



MIM 182305

UniProt ID P32418



(Tris-Glycine gel) Discontinuous SDS-PAGE (reduced) with 5% enrichment gel and 15% separation gel.

Tel: 1-631-559-9269 1-516-512-3133

Email: info@creative-biomart.com Fax: 1-631-938-8127

45-1 Ramsey Road, Shirley, NY 11967, USA