

Recombinant Human SLCO1A2 Protein (Phe406-Phe513), N-His tagged

Cat. No. SLCO1A2-6311H Lot. No. (See product label)

SPECIFICATION

Product Overview	Recombinant human SLCO1A2 (Phe406-Phe513) fused with the N-His tag was expressed in E. coli.
Species	Human
Source	E.coli
ProteinLength	Phe406-Phe513
Form	Lyophilized powder/frozen liquid
Molecular Mass	11.50 kDa
Purity	> 90 % as determined by SDS-PAGE
Notes	For research use only.
Storage	Use a manual defrost freezer and avoid repeated freeze thaw cycles. Store at 2 to 8 centigrade for one week. Store at -20 to -80 centigrade for twelve months from the date of receipt.
Storage Buffer	0.01M PBS, pH 7.4, 0.02 % NLS
Reconstitution	Reconstitute in sterile water for a stock solution.

 Tel: 1-631-559-9269 1-516-512-3133

 Email: info@creative-biomart.com  Fax: 1-631-938-8127

 45-1 Ramsey Road, Shirley, NY 11967, USA

Shipping They are shipped out with dry ice/blue ice unless customers require otherwise.

GENE INFORMATION

Gene Name [SLCO1A2 solute carrier organic anion transporter family, member 1A2 \[Homo sapiens \(human\) \]](#)

Official Symbol [SLCO1A2](#)

Synonyms [SLCO1A2](#); solute carrier organic anion transporter family, member 1A2; [SLC21A3](#), solute carrier family 21 (organic anion transporter), member 3; solute carrier organic anion transporter family member 1A2; [OATP](#); [OATP A](#); [OATP1A2](#); [OATP-1](#); solute carrier family 21 member 3; organic anion transporting polypeptide A; organic anion-transporting polypeptide 1; sodium-independent organic anion transporter; solute carrier family 21 (organic anion transporter), member 3; [OATP-A](#); [SLC21A3](#);

Gene ID [6579](#)

mRNA Refseq [NM_021094](#)

Protein Refseq [NP_066580](#)

MIM [602883](#)

UniProt ID [P46721](#)

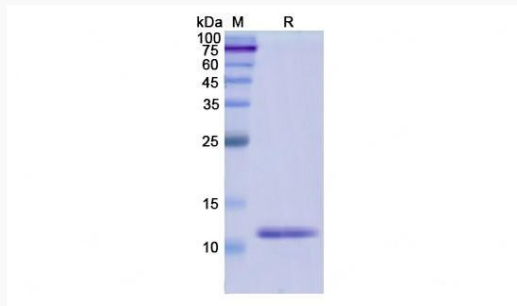
 Tel: 1-631-559-9269 1-516-512-3133

 Email: info@creative-biomart.com  Fax: 1-631-938-8127

 45-1 Ramsey Road, Shirley, NY 11967, USA



SDS-PAGE



Tel: 1-631-559-9269 1-516-512-3133

Email: info@creative-biomart.com Fax: 1-631-938-8127

45-1 Ramsey Road, Shirley, NY 11967, USA