

Recombinant Human SLCO1A2 protein, GST-tagged

Cat. No. SLCO1A2-7143H Lot. No. (See product label)

SPECIFICATION

Product Overview	Recombinant Human SLCO1A2 protein(406-513 aa), fused with N-terminal GST tag, was expressed in E.coli.
Species	Human
Source	E.coli
ProteinLength	406-513 aa
Form	The purified protein was lyophilized from sterile phosphate-buffered saline (PBS: 58 mM Na ₂ HPO ₄ , 17 mM NaH ₂ PO ₄ , 68 mM NaCl, pH 8.0). Prior to lyophilization, 5% (w/v) trehalose and 5% (w/v) mannitol were incorporated as cryoprotective excipients.
AASequence	FLMTCENSSVVGINTSYEGIPQDLYVENDIFADCNVDCNCPSKIWDPVCGNNGLSYL SACLAGCETSIGTGINMVFQNCSCIQTSGNSSAVLGLCDKGPDCSLMLQYF
Purity	85%, by SDS-PAGE with Coomassie Brilliant Blue staining.
Storage	Store at 2-8°C for 1-2 weeks. Aliquot and store at -20°C to -80°C for up to 3 months, reconstitution with sterile water and addition of an equal volume of glycerol. Avoid repeat freeze-thaw cycles.
Reconstitution	Dissolve the product in 200 µl sterile water to achieve a working concentration of 0.25 g/

 Tel: 1-631-559-9269 1-516-512-3133

 Email: info@creative-biomart.com  Fax: 1-631-938-8127

 45-1 Ramsey Road, Shirley, NY 11967, USA

μl. If experimental compatibility allows, mix the aqueous solution with an equal volume of glycerol (1:1 ratio) after initial reconstitution.

GENE INFORMATION

Gene Name	SLCO1A2 solute carrier organic anion transporter family, member 1A2 [Homo sapiens]
Official Symbol	SLCO1A2
Synonyms	SLCO1A2; solute carrier organic anion transporter family, member 1A2; SLC21A3, solute carrier family 21 (organic anion transporter), member 3; solute carrier organic anion transporter family member 1A2; OATP; OATP A; OATP1A2; OATP-1; solute carrier family 21 member 3; organic anion transporting polypeptide A; organic anion-transporting polypeptide 1; sodium-independent organic anion transporter; solute carrier family 21 (organic anion transporter), member 3; OATP-A; SLC21A3;
Gene ID	6579
mRNA Refseq	NM_021094
Protein Refseq	NP_066580
MIM	602883
UniProt ID	P46721

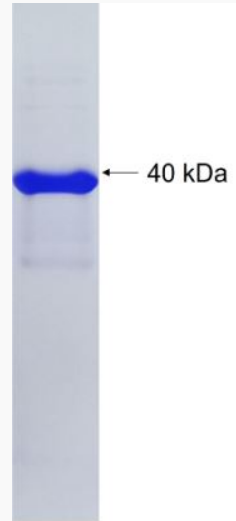
 Tel: 1-631-559-9269 1-516-512-3133

 Email: info@creative-biomart.com  Fax: 1-631-938-8127

 45-1 Ramsey Road, Shirley, NY 11967, USA



SDS-PAGE



Tel: 1-631-559-9269 1-516-512-3133

Email: info@creative-biomart.com Fax: 1-631-938-8127

45-1 Ramsey Road, Shirley, NY 11967, USA