

## Recombinant Human SLCO1B1 Protein, GST-tagged

Cat. No. SLCO1B1-27769TH Lot. No. (See product label)

### SPECIFICATION

<b>Product Overview</b>	Recombinant Human SLCO1B1(481 a.a. - 570 a.a.) fused with GST tag at N-terminal was expressed in Wheat Germ.
<b>Species</b>	Human
<b>Source</b>	Wheat Germ
<b>ProteinLength</b>	481 a.a. - 570 a.a.
<b>Description</b>	This gene encodes a liver-specific member of the organic anion transporter family. The encoded protein is a transmembrane receptor that mediates the sodium-independent uptake of numerous endogenous compounds including bilirubin, 17-beta-glucuronosyl estradiol and leukotriene C4. This protein is also involved in the removal of drug compounds such as statins, bromosulfophthalein and rifampin from the blood into the hepatocytes. Polymorphisms in the gene encoding this protein are associated with impaired transporter function.
<b>Form</b>	50 mM Tris-HCl, 10 mM reduced Glutathione, pH=8.0 in the elution buffer.
<b>Molecular Mass</b>	35.64 kDa
<b>AA Sequence</b>	YISPCLAGCKSSSGNKKPIVFYNCSCLEVTGLQNRNYS AHLGECPRDDACTRKFYFF VAIQVLNLF FSALGGTSHVMLIVKIVQPELKSL
<b>Applications</b>	Enzyme-linked Immunoabsorbent Assay; Western Blot (Recombinant protein);

 Tel: 1-631-559-9269 1-516-512-3133

 Email: [info@creative-biomart.com](mailto:info@creative-biomart.com)  Fax: 1-631-938-8127

 45-1 Ramsey Road, Shirley, NY 11967, USA

Antibody Production; Protein Array

**Notes** Best use within three months from the date of receipt of this protein.

**Storage** Store at -80 centigrade. Aliquot to avoid repeated freezing and thawing.

## GENE INFORMATION

**Gene Name** [SLCO1B1 solute carrier organic anion transporter family, member 1B1 \[ Homo sapiens \]](#)

**Official Symbol** [SLCO1B1](#)

**Synonyms** SLCO1B1; solute carrier organic anion transporter family, member 1B1; SLC21A6, solute carrier family 21 (organic anion transporter), member 6; solute carrier organic anion transporter family member 1B1; LST 1; OATP C; OATP1B1; OATP-2; solute carrier family 21 member 6; liver-specific organic anion transporter 1; sodium-independent organic anion-transporting polypeptide 2; solute carrier family 21 (organic anion transporter), member 6; LST1; HBLRR; LST-1; OATP2; OATPC; OATP-C; SLC21A6; MGC133282;

**Gene ID** [10599](#)

**mRNA Refseq** [NM\\_006446](#)

**Protein Refseq** [NP\\_006437](#)

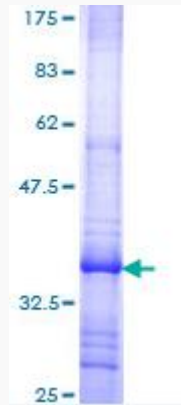
**MIM** [604843](#)

**UniProt ID** [Q9Y6L6](#)

 Tel: 1-631-559-9269 1-516-512-3133

 Email: [info@creative-biomart.com](mailto:info@creative-biomart.com)  Fax: 1-631-938-8127

 45-1 Ramsey Road, Shirley, NY 11967, USA



 Tel: 1-631-559-9269 1-516-512-3133

 Email: [info@creative-biomart.com](mailto:info@creative-biomart.com)  Fax: 1-631-938-8127

 45-1 Ramsey Road, Shirley, NY 11967, USA