

## Recombinant Human SLC01B1 Protein (Phe426-Phe537), N-His tagged

Cat. No. SLC01B1-5562H    Lot. No. (See product label)

### SPECIFICATION

<b>Product Overview</b>	Recombinant human SLC01B1/LST-1/OATP-2 (Phe426-Phe537) fused with the N-His tag was expressed in E. coli.
<b>Species</b>	Human
<b>Source</b>	E.coli
<b>ProteinLength</b>	Phe426-Phe537
<b>Form</b>	Lyophilized powder/frozen liquid
<b>Molecular Mass</b>	12.45 kDa
<b>Purity</b>	> 90 % as determined by SDS-PAGE
<b>Notes</b>	For research use only.
<b>Storage</b>	Use a manual defrost freezer and avoid repeated freeze thaw cycles. Store at 2 to 8 centigrade for one week. Store at -20 to -80 centigrade for twelve months from the date of receipt.
<b>Storage Buffer</b>	0.01M PBS, pH 7.4, 0.02 % NLS
<b>Reconstitution</b>	Reconstitute in sterile water for a stock solution.

 Tel: 1-631-559-9269    1-516-512-3133

 Email: [info@creative-biomart.com](mailto:info@creative-biomart.com)     Fax: 1-631-938-8127

 45-1 Ramsey Road, Shirley, NY 11967, USA

**Shipping** They are shipped out with dry ice/blue ice unless customers require otherwise.

## GENE INFORMATION

**Gene Name** [SLCO1B1 solute carrier organic anion transporter family, member 1B1 \[ Homo sapiens \(human\) \]](#)

**Official Symbol** [SLCO1B1](#)

**Synonyms** [SLCO1B1](#); [solute carrier organic anion transporter family, member 1B1](#); [SLC21A6](#), [solute carrier family 21 \(organic anion transporter\), member 6](#); [solute carrier organic anion transporter family member 1B1](#); [LST 1](#); [OATP C](#); [OATP1B1](#); [OATP-2](#); [solute carrier family 21 member 6](#); [liver-specific organic anion transporter 1](#); [sodium-independent organic anion-transporting polypeptide 2](#); [solute carrier family 21 \(organic anion transporter\), member 6](#); [LST1](#); [HBLRR](#); [LST-1](#); [OATP2](#); [OATPC](#); [OATP-C](#); [SLC21A6](#); [MGC133282](#);

**Gene ID** [10599](#)

**mRNA Refseq** [NM\\_006446](#)

**Protein Refseq** [NP\\_006437](#)

**MIM** [604843](#)

**UniProt ID** [Q9Y6L6](#)

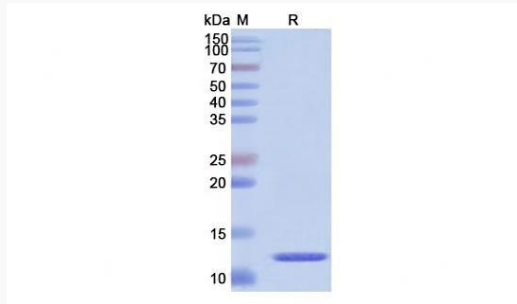
 Tel: 1-631-559-9269 1-516-512-3133

 Email: [info@creative-biomart.com](mailto:info@creative-biomart.com)  Fax: 1-631-938-8127

 45-1 Ramsey Road, Shirley, NY 11967, USA



SDS-PAGE



Tel: 1-631-559-9269 1-516-512-3133

Email: [info@creative-biomart.com](mailto:info@creative-biomart.com) Fax: 1-631-938-8127

45-1 Ramsey Road, Shirley, NY 11967, USA