

Recombinant Full Length Human SLIT2 Protein, C-Flag-tagged

Cat. No. SLIT2-1147HFL Lot. No. (See product label)

SPECIFICATION

Product Overview	Recombinant Full Length Human SLIT2 Protein, fused to Flag-tag at C-terminus, was expressed in Mammalian cells.
Species	Human
Source	Mammalian Cells
Description	<p>This gene encodes a member of the slit family of secreted glycoproteins, which are ligands for the Robo family of immunoglobulin receptors. Slit proteins play highly conserved roles in axon guidance and neuronal migration and may also have functions during other cell migration processes including leukocyte migration. Members of the slit family are characterized by an N-terminal signal peptide, four leucine-rich repeats, nine epidermal growth factor repeats, and a C-terminal cysteine knot. Proteolytic processing of this protein gives rise to an N-terminal fragment that contains the four leucine-rich repeats and five epidermal growth factor repeats and a C-terminal fragment that contains four epidermal growth factor repeats and the cysteine knot. Both full length and cleaved proteins are secreted extracellularly and can function in axon repulsion as well as other specific processes. Alternative splicing results in multiple transcript variants.</p>
Form	25 mM Tris HCl, pH 7.3, 100 mM glycine, 10% glycerol.
Molecular Mass	169.7 kDa
AA Sequence	MRGVGWQMLSLSLGLVLAILNKVAPQACPAQCSCSGSTVDCHGLALRSVPRNIPRN

 Tel: 1-631-559-9269 1-516-512-3133

 Email: info@creative-biomart.com  Fax: 1-631-938-8127

 45-1 Ramsey Road, Shirley, NY 11967, USA

TERLDLNGNNITRI TKTDFAGLRHLRVLQLMENKISTIERGAFQDLKELERLRLNRNH
LQLFPELLFLGTAKLYRLDLSENQIQ AIRPKAFRGAVDIKNLQLDYNQISCIEDGAFRA
LRDLEVLTLNNNNITRLSVASFNHMPKLRTRFRLHSNN LYCDCHLAWLSDWLRQRPR
VGLYTQCMGPSHLRGHNVAEVQKREFVCSGHQSFMAPSCSVLHCPAACTCS NNIV
DCRGKGLTEIPTNLPETITEIRLEQNTIKVIPPAGAFSPYKKLRRIDLSNNQISELAPDAF
QGLRSL NSLVLYGNKITELPKSLFEGLFSLQLLLLNANKINCLRVDAFQDLHNLNLLSL
YDNKLQTIAGTFSPLR AIQTMHLAQNPFCDCHLKWLADYLHTNPIETSGARCTSP
RRLANKRIGQIKSKKFRCSAKEQYFIPGTE DYRSKLSGDCFADLACPEKCRCEGTTV
DCSNQKLNKIPEHIPQYTAELRLNNEFTVLEATGIFKKLPQL RKINFSNNKITDIEEG
AFEGASGVNEILLTSNRLENVQHMKFGLKLESLKTLMLRSNRITCVGNDSFIGLS SVR
LLSLYDNQITTVAPGAFDTLHSLSTLNLNLANPFNCNCYLAWLGEWLRKKRIVTGNPR
CQKPYFLKEI PIQDVAIQDFTCDDGNDNSCSPSRCPTTECTCLD TVVRC SNKGLKV
LPKGIPRDVTELYLDGNQFTLVP KELSNYKHLTLIDLSNNRISTLSNQSF SNMTQLLT
LILSYNRLRCIPPRTFDGLKSLRLLSLHGNDISVV PEGAFNDLSALSHLAIGANPLYCD
CNMQWLSDWVKSEYKEPGIARCAGPGEMADKLLLTTPSKKFTCQGP VDVNILAKC
NPCLSNPCKNDGTCNSDPVDFYRCTCPYGFKGQDCDVP IHACISNPCKHGGTCHLK
EGEED GFWCICADGFEGENCEVNVDDCEDNDCENNSTCVDGINNYTCLCPPEYTG
ELCEVKLDFCAQDLNPCQHD SKCILT PKGFKCDCTPGYVGEHCDIDFDDCQDNKCK
NGAHCTDAVNGYTCICPEGYSGLFCEFSPPMVLP RTSPCDNFDCQNGAQCIVRINE
PICQCLPGYQGEKCEKLVSVNFINKESYLQIPSAKVRPQTNITLQIAT DEDSGILLYKG
DKDHIAVELYRGRVRASYDTGSHPASAIYSVETINDGNFHIVELLALDQSLSLSDVGG
N PKIITNLSKQSTLNFDSPLYVGGMPGKSNVASLRQAPGQNGTSFHGCIRNLYINSE
LQDFQKVPMQTGIL PGCEPCHKKVC AHGTCQPSSQAGFTCECQEGWMGPLCDQR
TNDPCLGNKCVHGTCLPINA FSYSCKCLEG HGGVLCDEEEDLFNPCQAIKCKHKGK
RLSGLGQPYCECSSGYTG DSCDREISCRGERIRDYYQKQQGYAA
CQTTKVSRL ECRGGCAGGQCCGPLRSKRRKYSFECTDGSS FVDEVEKVVKCGCT
RCVSTRTRPLEQKLISEEDLAANDILDYKDDDDKV

Purity

> 80% as determined by SDS-PAGE and Coomassie blue staining.

 Tel: 1-631-559-9269 1-516-512-3133 Email: info@creative-biomart.com  Fax: 1-631-938-8127 45-1 Ramsey Road, Shirley, NY 11967, USA

Stability	Stable for 12 months from the date of receipt of the product under proper storage and handling conditions. Avoid repeated freeze-thaw cycles.
Storage	Store at -80 centigrade.
Concentration	>50 ug/mL as determined by microplate BCA method.
Preparation	Recombinant protein was captured through anti-DDK affinity column followed by conventional chromatography steps.
Protein Families	Druggable Genome, Secreted Protein
Protein Pathways	Axon guidance
Full Length	Full L.

GENE INFORMATION

Gene Name	SLIT2 slit guidance ligand 2 [Homo sapiens (human)]
Official Symbol	SLIT2
Synonyms	SLIL3; Slit-2
Gene ID	9353
mRNA Refseq	NM_004787.4
Protein Refseq	NP_004778.1
MIM	603746

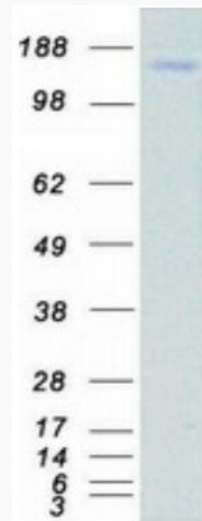
 Tel: 1-631-559-9269 1-516-512-3133

 Email: info@creative-biomart.com  Fax: 1-631-938-8127

 45-1 Ramsey Road, Shirley, NY 11967, USA

UniProt ID

O94813



Coomassie blue staining of purified SLIT2 protein.

 Tel: 1-631-559-9269 1-516-512-3133

 Email: info@creative-biomart.com  Fax: 1-631-938-8127

 45-1 Ramsey Road, Shirley, NY 11967, USA