

Recombinant Human SLIT3 protein, His-tagged

Cat. No. SLIT3-754H Lot. No. (See product label)

SPECIFICATION

Product Overview	Recombinant Human SLIT3 protein(O75094)(34-155aa), fused with N-terminal His tag, was expressed in E.coli.
Species	Human
Source	E.coli
ProteinLength	34-155aa
Form	If the delivery form is liquid, the default storage buffer is Tris/PBS-based buffer, 5%-50% glycerol. If the delivery form is lyophilized powder, the buffer before lyophilization is Tris/PBS-based buffer, 6% Trehalose, pH 8.0.
Molecular Mass	17.9 kDa
Purity	Greater than 90% as determined by SDS-PAGE.
Storage	Store at -20°C/-80°C upon receipt, aliquoting is necessary for mutiple use. Avoid repeated freeze-thaw cycles.
Reconstitution	We recommend that this vial be briefly centrifuged prior to opening to bring the contents to the bottom. Please reconstitute protein in deionized sterile water to a concentration of 0.1-1.0 mg/mL. We recommend to add 5-50% of glycerol (final concentration) and aliquot for long-term storage at -20°C/-80°C.

 Tel: 1-631-559-9269 1-516-512-3133

 Email: info@creative-biomart.com  Fax: 1-631-938-8127

 45-1 Ramsey Road, Shirley, NY 11967, USA

AA Sequence CPTKCTCSAASVDCHGLGLRAVPRGIPRNAERLDLDRNNITRITKMDFAGLKNLRVL
HLEDNQVSVIERGAFQDLKQLERLRLNKNKLQVLPELLFQSTPKLTRLDLSENQIQGI
PRKAFRG

GENE INFORMATION

Gene Name [SLIT3 slit homolog 3 \(Drosophila\) \[Homo sapiens \]](#)

Official Symbol [SLIT3](#)

Synonyms [SLIT3](#); slit homolog 3 (Drosophila); [SLIL2, slit \(Drosophila\) homolog 3](#); slit homolog 3 protein; [MEGF5](#); [Slit 3](#); [SLIT1](#); [slit2](#); multiple EGF-like domains protein 5; multiple epidermal growth factor-like domains protein 5; [SLIL2](#); [Slit-3](#); [FLJ10764](#);

Gene ID [6586](#)

mRNA Refseq [NM_003062](#)

Protein Refseq [NP_003053](#)

MIM [603745](#)

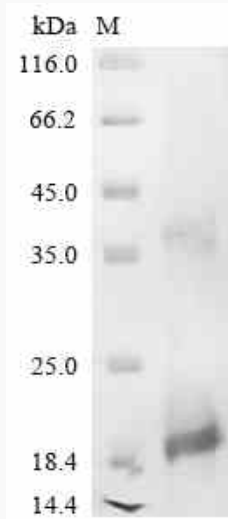
UniProt ID [O75094](#)

 Tel: 1-631-559-9269 1-516-512-3133

 Email: info@creative-biomart.com  Fax: 1-631-938-8127

 45-1 Ramsey Road, Shirley, NY 11967, USA

SDS-PAGE



 Tel: 1-631-559-9269 1-516-512-3133

 Email: info@creative-biomart.com  Fax: 1-631-938-8127

 45-1 Ramsey Road, Shirley, NY 11967, USA