

Recombinant Human SLIT and NTRK like family member 1 Protein, His-tagged

Cat. No. SLITRK1-001H Lot. No. (See product label)

SPECIFICATION

Product Overview	Recombinant human SLIT and NTRK like family member 1 Protein (16-616 aa) with His tag was expressed in E. coli.
Species	Human
Source	E.coli
ProteinLength	16-616aa
Description	This gene encodes a member of the SLITRK protein family. Members of this family are integral membrane proteins that are characterized by two N-terminal leucine-rich repeat (LRR) domains and a C-terminal region that shares homology with trk neurotrophin receptors. However, the protein encoded by this gene lacks the region of homology to neurotrophin receptors. This protein is thought to be involved in neurite outgrowth. Mutations in this gene may be associated with Tourette syndrome. Alternative splicing results in multiple transcript variants.
Tag	C-His
Molecular Mass	68 kDa
AA Sequence	MAGNVTGDVCKEKICSCNEIEGDLHVDCEKKGFTSLQRFTAPTSQFYHLFLHGNSLT RLFPNEFANFYNAVSLHMENGLHEIVPGAFLGLQLVKRLHINNNKIKSFRKQTFGLGL DDLEYLQADFNLLRDIDPGAQDLNKLEVLILNDNLISTLPANVFQYVPITHLDRGNR

 Tel: 1-631-559-9269 1-516-512-3133

 Email: info@creative-biomart.com  Fax: 1-631-938-8127

 45-1 Ramsey Road, Shirley, NY 11967, USA

LKTLPYEEVLEQIPGIAEILLEDNPWDCTCDLLSLKEWLENIPKNALIGRVVCEAPTRL
 QGKDLNETTEQDLCPLKNRVDSSLPAPPAQEETFAPGPLPTPFKTNGQEDHATPGS
 APNGGKIPGNWQIKIRPTAAIATGSSRNKPLANSRPCGGCSCDHIPGSGLKMNCCN
 NNRVSSLADLKPKLSNVQELFLRDNKIHSIRKSHFVDYKNLILLDLGNNNIATVENNTF
 KNLLDLRWLYMDSNYLDTLSREKFAGLQNLEYLNVEYNAIQLILPGTFNAMPKLRILIL
 NNNLLRSLPVDVFAGVSLSKLSLHNNYFMYLPVAGVLDQLTSIIQIDLHGPNWECSCT
 IVPFKQWAERLGSEVLMSDLKCETPVNFFRKDFMLLSNDEICPQLYARISPTLTSHSK
 NSTGLAETGTHSNSYLDTSRVSHHHHHHHH

Endotoxin < 1 EU/μg of protein (determined by LAL method)

Purity > 90% by SDS-PAGE

Storage Store it under sterile conditions at -20 to -80 centigrade. It is recommended that the protein be aliquoted for optimal storage. Avoid repeated freeze-thaw cycles.

Storage Buffer Sterile PBS, pH 7.4, 10% Glycerol

Concentration 1 mg/mL by BCA

GENE INFORMATION

Gene Name SLITRK1 SLIT and NTRK like family member 1 [Homo sapiens (human)]

Official Symbol SLITRK1

Synonyms SLITRK1; SLIT and NTRK-like family, member 1; leucine rich repeat containing 12 , LRRC12; SLIT and NTRK-like protein 1; KIAA1910; slit and trk like gene 1; leucine-rich repeat-containing protein 12; TTM; LRRC12; FLJ54428; KIAA0918; RP11-395N17.1;

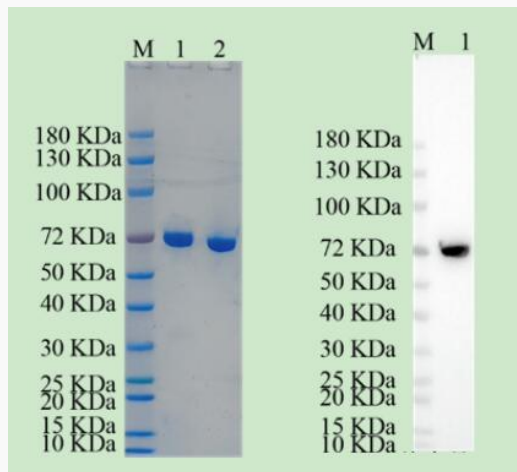
 Tel: 1-631-559-9269 1-516-512-3133

 Email: info@creative-biomart.com  Fax: 1-631-938-8127

 45-1 Ramsey Road, Shirley, NY 11967, USA

Gene ID	114798
mRNA Refseq	NM_052910
Protein Refseq	NP_443142
MIM	609678
UniProt ID	Q96PX8

Reducing 4%-20%
**SDS-PAGE (CBB
 stained) and WB
 (Anti-His Mouse
 Monoclonal
 antibody) analysis
 profiles of purified
 SLITRK1.**



1. SLITRK1
 2. BSA

Tel: 1-631-559-9269 1-516-512-3133

Email: info@creative-biomart.com Fax: 1-631-938-8127

45-1 Ramsey Road, Shirley, NY 11967, USA