

# Recombinant Human SLPI Protein, Myc/DDK-tagged, C13 and N15-labeled

**Cat. No.** SLPI-2349H    **Lot. No.** (See product label)

## SPECIFICATION

<b>Product Overview</b>	SLPI MS Standard C13 and N15-labeled recombinant protein (NP_003055) with a C-terminal MYC/DDK tag, was expressed in HEK293 cells.
<b>Species</b>	Human
<b>Source</b>	HEK293
<b>Description</b>	This gene encodes a secreted inhibitor which protects epithelial tissues from serine proteases. It is found in various secretions including seminal plasma, cervical mucus, and bronchial secretions, and has affinity for trypsin, leukocyte elastase, and cathepsin G. Its inhibitory effect contributes to the immune response by protecting epithelial surfaces from attack by endogenous proteolytic enzymes. This antimicrobial protein has antibacterial, antifungal and antiviral activity.
<b>Molecular Mass</b>	14.3 kDa
<b>AA Sequence</b>	MKSSGLFPFLVLLALGTLAPWAVEGSGKSFKAGVCPKKSQAQLRYKKPECQSDW QCPGKKRCCPDTCGIKCLDPVDTNPTRRKP GKCPVTY GQCLMLNPPNFCEMDGQ CKRDLKCCMGKSCVSPVKATRTRPLEQKLISEEDLAANDILDYKDDDDKV
<b>Purity</b>	> 80% as determined by SDS-PAGE and Coomassie blue staining
<b>Stability</b>	Stable for 3 months from receipt of products under proper storage and handling conditions.

 Tel: 1-631-559-9269    1-516-512-3133

 Email: [info@creative-biomart.com](mailto:info@creative-biomart.com)     Fax: 1-631-938-8127

 45-1 Ramsey Road, Shirley, NY 11967, USA

<b>Storage</b>	Store at -80 centigrade. Avoid repeated freeze-thaw cycles.
<b>Concentration</b>	50 µg/mL as determined by BCA
<b>Storage Buffer</b>	100 mM glycine, 25 mM Tris-HCl, pH 7.3.
<b>GENE INFORMATION</b>	
<b>Gene Name</b>	SLPI secretory leukocyte peptidase inhibitor [ Homo sapiens (human) ]
<b>Official Symbol</b>	SLPI
<b>Synonyms</b>	SLPI; secretory leukocyte peptidase inhibitor; secretory leukocyte protease inhibitor (antileukoproteinase); antileukoproteinase; ALK1; ALP; BLPI; HUSI; HUSI I; WAP4; WFDC4; HUSI-1; protease inhibitor WAP4; mucus proteinase inhibitor; seminal proteinase inhibitor; WAP four-disulfide core domain protein 4; MPI; HUSI-I;
<b>Gene ID</b>	6590
<b>mRNA Refseq</b>	NM_003064
<b>Protein Refseq</b>	NP_003055
<b>MIM</b>	107285
<b>UniProt ID</b>	P03973

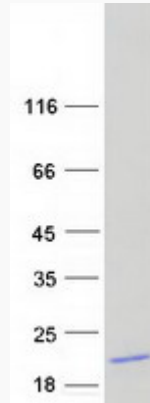
 Tel: 1-631-559-9269 1-516-512-3133

 Email: [info@creative-biomart.com](mailto:info@creative-biomart.com)  Fax: 1-631-938-8127

 45-1 Ramsey Road, Shirley, NY 11967, USA



SDS-PAGE



Tel: 1-631-559-9269 1-516-512-3133

Email: [info@creative-biomart.com](mailto:info@creative-biomart.com) Fax: 1-631-938-8127

45-1 Ramsey Road, Shirley, NY 11967, USA