

Recombinant Human SLPI Protein, His-tagged

Cat. No. SLPI-2704H Lot. No. (See product label)

SPECIFICATION

Product Overview	Recombinant Human SLPI Protein (Ser26-Ala132) with a N-His tag was expressed in E. coli.
Species	Human
Source	E.coli
ProteinLength	Ser26-Ala132
Description	This gene encodes a secreted inhibitor which protects epithelial tissues from serine proteases. It is found in various secretions including seminal plasma, cervical mucus, and bronchial secretions, and has affinity for trypsin, leukocyte elastase, and cathepsin G. Its inhibitory effect contributes to the immune response by protecting epithelial surfaces from attack by endogenous proteolytic enzymes. This antimicrobial protein has antibacterial, antifungal and antiviral activity.
Form	Freeze-dried powder
Molecular Mass	Predicted Molecular Mass: 15.4 kDa Accurate Molecular Mass: 15 kDa
Endotoxin	<1.0 EU per 1g (determined by the LAL method).
Purity	> 90%

 Tel: 1-631-559-9269 1-516-512-3133

 Email: info@creative-biomart.com  Fax: 1-631-938-8127

 45-1 Ramsey Road, Shirley, NY 11967, USA

Applications	Positive Control; Immunogen; SDS-PAGE; WB.
Stability	The thermal stability is described by the loss rate. The loss rate was determined by accelerated thermal degradation test, that is, incubate the protein at 37 centigrade for 48h, and no obvious degradation and precipitation were observed. The loss rate is less than 5% within the expiration date under appropriate storage condition.
Storage	Avoid repeated freeze/thaw cycles. Store at 2-8 centigrade for one month. Aliquot and store at -80 centigrade for 12 months.
Storage Buffer	20mM Tris, 150mM NaCl, pH8.0, containing 1mM EDTA, 1mM DTT, 0.01% SKL, 5% Trehalose and Proclin300.
Reconstitution	Reconstitute in 20mM Tris, 150mM NaCl (pH8.0) to a concentration of 0.1-1.0 mg/mL. Do not vortex.

GENE INFORMATION

Gene Name	SLPI secretory leukocyte peptidase inhibitor [Homo sapiens (human)]
Official Symbol	SLPI
Synonyms	SLPI; secretory leukocyte peptidase inhibitor; secretory leukocyte protease inhibitor (antileukoproteinase); antileukoproteinase; ALK1; ALP; BLPI; HUSI; HUSI I; WAP4; WFDC4; HUSI-1; protease inhibitor WAP4; mucus proteinase inhibitor; seminal proteinase inhibitor; WAP four-disulfide core domain protein 4; MPI; HUSI-I;
Gene ID	6590
mRNA Refseq	NM_003064

 Tel: 1-631-559-9269 1-516-512-3133

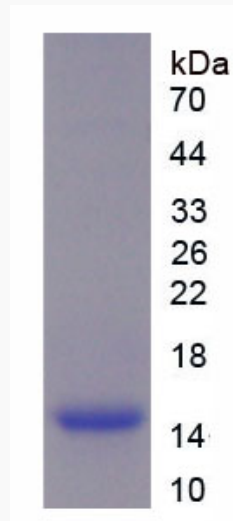
 Email: info@creative-biomart.com  Fax: 1-631-938-8127

 45-1 Ramsey Road, Shirley, NY 11967, USA

Protein Refseq NP_003055

MIM 107285

UniProt ID P03973



 Tel: 1-631-559-9269 1-516-512-3133

 Email: info@creative-biomart.com  Fax: 1-631-938-8127

 45-1 Ramsey Road, Shirley, NY 11967, USA