

Recombinant Human SLPI protein, hFc-tagged

Cat. No. SLPI-5643H Lot. No. (See product label)

SPECIFICATION

Product Overview	Recombinant Human SLPI protein(P03973)(Ser26-Ala132), fused with C-terminal hFc tag, was expressed in HEK293.
Species	Human
Source	HEK293
ProteinLength	Ser26-Ala132
Tag	C-hFc
Form	Supplied as 0.22µm filtered solution in PBS, 350mM NaCl (pH 7.4).
Bio-activity	Immobilized Human SLPI, hFc Tag at 5ug/ml (100ul/Well) on the plate. Dose response curve for Biotinylated Anti-SLPI Antibody, hFc Tag with the EC50 of 0.36ug/ml determined by ELISA (QC Test).
Molecular Mass	The protein has a predicted MW of 38.5 kDa. Due to glycosylation, the protein migrates to 40-50 kDa based on Tris-Bis PAGE result.
Endotoxin	Less than 1EU per µg by the LAL method.
Purity	> 95% as determined by Tris-Bis PAGE;> 95% as determined by HPLC
Storage	Valid for 12 months from date of receipt when stored at -80°C. Recommend to aliquot

 Tel: 1-631-559-9269 1-516-512-3133

 Email: info@creative-biomart.com  Fax: 1-631-938-8127

 45-1 Ramsey Road, Shirley, NY 11967, USA

the protein into smaller quantities for optimal storage. Please do not repeated freeze-thaw cycles.

Reconstitution

It is recommended that sterile water be added to the vial to prepare a stock solution of 0.2 ug/ul. Centrifuge the vial at 4°C before opening to recover the entire contents.

GENE INFORMATION

Gene Name [SLPI secretory leukocyte peptidase inhibitor \[Homo sapiens \]](#)

Official Symbol [SLPI](#)

Synonyms

SLPI; secretory leukocyte peptidase inhibitor; secretory leukocyte protease inhibitor (antileukoproteinase); antileukoproteinase; ALK1; ALP; BLPI; HUSI; HUSI I; WAP4; WFDC4; HUSI-1; protease inhibitor WAP4; mucus proteinase inhibitor; seminal proteinase inhibitor; WAP four-disulfide core domain protein 4; MPI; HUSI-I;

Gene ID [6590](#)

mRNA Refseq [NM_003064](#)

Protein Refseq [NP_003055](#)

MIM [107285](#)

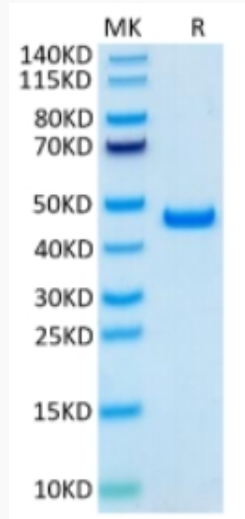
UniProt ID [P03973](#)

 Tel: 1-631-559-9269 1-516-512-3133

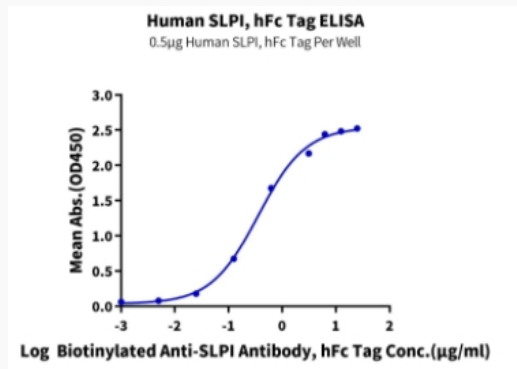
 Email: info@creative-biomart.com  Fax: 1-631-938-8127

 45-1 Ramsey Road, Shirley, NY 11967, USA

Tris-Bis PAGE



ELISA Data



 Tel: 1-631-559-9269 1-516-512-3133

 Email: info@creative-biomart.com  Fax: 1-631-938-8127

 45-1 Ramsey Road, Shirley, NY 11967, USA