

## Recombinant Human SLPI Protein (Ser26-Ala132), N-GST tagged

**Cat. No.** SLPI-6313H    **Lot. No.** (See product label)

### SPECIFICATION

<b>Product Overview</b>	Recombinant human SLPI (Ser26-Ala132) fused with the N-GST tag was expressed in E. coli.
<b>Species</b>	Human
<b>Source</b>	E.coli
<b>ProteinLength</b>	Ser26-Ala132
<b>Form</b>	Lyophilized powder/frozen liquid
<b>Molecular Mass</b>	38.57 kDa
<b>Purity</b>	> 90 % as determined by SDS-PAGE
<b>Notes</b>	For research use only.
<b>Storage</b>	Use a manual defrost freezer and avoid repeated freeze thaw cycles. Store at 2 to 8 centigrade for one week. Store at -20 to -80 centigrade for twelve months from the date of receipt.
<b>Storage Buffer</b>	0.01M PBS, pH 7.4, 0.02 % NLS
<b>Reconstitution</b>	Reconstitute in sterile water for a stock solution.

 Tel: 1-631-559-9269    1-516-512-3133

 Email: [info@creative-biomart.com](mailto:info@creative-biomart.com)     Fax: 1-631-938-8127

 45-1 Ramsey Road, Shirley, NY 11967, USA

**Shipping** They are shipped out with dry ice/blue ice unless customers require otherwise.

## GENE INFORMATION

**Gene Name** [SLPI secretory leukocyte peptidase inhibitor \[ Homo sapiens \(human\) \]](#)

**Official Symbol** [SLPI](#)

**Synonyms** SLPI; secretory leukocyte peptidase inhibitor; secretory leukocyte protease inhibitor (antileukoproteinase); antileukoproteinase; ALK1; ALP; BLPI; HUSI; HUSI I; WAP4; WFDC4; HUSI-1; protease inhibitor WAP4; mucus proteinase inhibitor; seminal proteinase inhibitor; WAP four-disulfide core domain protein 4; MPI; HUSI-I;

**Gene ID** [6590](#)

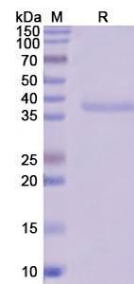
**mRNA Refseq** [NM\\_003064](#)

**Protein Refseq** [NP\\_003055](#)

**MIM** [107285](#)

**UniProt ID** [P03973](#)

### SDS-PAGE



 Tel: 1-631-559-9269 1-516-512-3133

 Email: [info@creative-biomart.com](mailto:info@creative-biomart.com)  Fax: 1-631-938-8127

 45-1 Ramsey Road, Shirley, NY 11967, USA