

Recombinant Full Length Human SLPI Protein, C-Flag-tagged

Cat. No. SLPI-950HFL Lot. No. (See product label)

SPECIFICATION

Product Overview	Recombinant Full Length Human SLPI Protein, fused to Flag-tag at C-terminus, was expressed in Mammalian cells.
Species	Human
Source	Mammalian Cells
Description	This gene encodes a secreted inhibitor which protects epithelial tissues from serine proteases. It is found in various secretions including seminal plasma, cervical mucus, and bronchial secretions, and has affinity for trypsin, leukocyte elastase, and cathepsin G. Its inhibitory effect contributes to the immune response by protecting epithelial surfaces from attack by endogenous proteolytic enzymes. This antimicrobial protein has antibacterial, antifungal and antiviral activity.
Form	25 mM Tris HCl, pH 7.3, 100 mM glycine, 10% glycerol.
Molecular Mass	11.7 kDa
AA Sequence	MKSSGLFPFLVLLALGTLAPWAVEGSGKSFKAGVCPPKKSQAQCLRYKKPECQSDW QCPGKKRCCPDTCGI KCLDPVDTPNPTRRKPGKCPVTYQGCLMLNPPNFCEMDGQCKRDLKCCMGMCVK SCVSPVKATRTRPLEQKLISEEDLAANDILDYKDDDDKV
Purity	> 80% as determined by SDS-PAGE and Coomassie blue staining.

 Tel: 1-631-559-9269 1-516-512-3133

 Email: info@creative-biomart.com  Fax: 1-631-938-8127

 45-1 Ramsey Road, Shirley, NY 11967, USA

Stability	Stable for 12 months from the date of receipt of the product under proper storage and handling conditions. Avoid repeated freeze-thaw cycles.
Storage	Store at -80 centigrade.
Concentration	>50 ug/mL as determined by microplate BCA method.
Preparation	Recombinant protein was captured through anti-DDK affinity column followed by conventional chromatography steps.
Protein Families	Secreted Protein
Full Length	Full L.

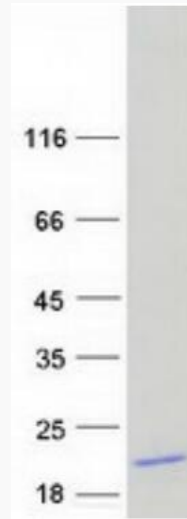
GENE INFORMATION

Gene Name	SLPI secretory leukocyte peptidase inhibitor [Homo sapiens (human)]
Official Symbol	SLPI
Synonyms	ALP; MPI; ALK1; BLPI; HUSI; WAP4; WFDC4; HUSI-I
Gene ID	6590
mRNA Refseq	NM_003064.4
Protein Refseq	NP_003055.1
MIM	107285
UniProt ID	P03973

 Tel: 1-631-559-9269 1-516-512-3133

 Email: info@creative-biomart.com  Fax: 1-631-938-8127

 45-1 Ramsey Road, Shirley, NY 11967, USA



Coomassie blue staining of purified SLPI protein.

 Tel: 1-631-559-9269 1-516-512-3133

 Email: info@creative-biomart.com  Fax: 1-631-938-8127

 45-1 Ramsey Road, Shirley, NY 11967, USA