

# Recombinant Full Length Human SLU7 Protein, C-Flag-tagged

Cat. No. SLU7-2067HFL Lot. No. (See product label)

## SPECIFICATION

<b>Product Overview</b>	Recombinant Full Length Human SLU7 Protein, fused to Flag-tag at C-terminus, was expressed in Mammalian cells.
<b>Species</b>	Human
<b>Source</b>	Mammalian Cells
<b>Description</b>	Pre-mRNA splicing occurs in two sequential transesterification steps. The protein encoded by this gene is a splicing factor that has been found to be essential during the second catalytic step in the pre-mRNA splicing process. It associates with the spliceosome and contains a zinc knuckle motif that is found in other splicing factors and is involved in protein-nucleic acid and protein-protein interactions.
<b>Form</b>	25 mM Tris HCl, pH 7.3, 100 mM glycine, 10% glycerol.
<b>Molecular Mass</b>	68.2 kDa
<b>AA Sequence</b>	MSATVVDAVNAAPLSGSKEMSLEEPKKMTREDWRKKKELEEQRKLGNAEVDDEE GKDINPHIPQYISSV PWYIDPSKRPTLKHQRQPQPEKQKQFSSSGEWYKRGVKENSV ITKYRKGACENCGAMTHKKKDCFERPRRV GAKFTGTNIAPDEHVQPQLMFDYDGK RDRWNGYNPEEHMKIVEEYAKVDLAKRTLKAQKLQEELASGKLV EQANSPKHQWG EEEPNSQTEKDHNSEDEDEDKYADDIDMPGQNFDSKRRITVRNLRIREEDIAKYLRNL DP NSAYYDPKTRAMRENPHYANAGKNPDEVSYAGDNFVRYTGDITISMAQTQLFAWE AYDKGSEVHLQADPTKL ELLYKSFVKKEDFKEQQKESILEKYGGQEHLDAPPAELL LAQTEDYVEYSRHGTVIKQGERAVACSKYE EDVKIHNHHTHIWGSYWKEGRWGYKC

 Tel: 1-631-559-9269 1-516-512-3133

 Email: [info@creative-biomart.com](mailto:info@creative-biomart.com)  Fax: 1-631-938-8127

 45-1 Ramsey Road, Shirley, NY 11967, USA

CHSFFKYSYCTGEAGKEIVNSEECIINEITGEESVKKPQTLMELH QEKLKEEKKKKKK  
 KKKKHKRKSDDSDDEEKKHEKLLKALNAEEARLLHVKETMQIDERKRPYNSMYETR  
 E PTEEEMEAYRMKRQRPDDPMASFLGQ TRTRPLEQKLISEEDLAANDILDYKDDD  
 DKV

<b>Purity</b>	> 80% as determined by SDS-PAGE and Coomassie blue staining.
<b>Stability</b>	Stable for 12 months from the date of receipt of the product under proper storage and handling conditions. Avoid repeated freeze-thaw cycles.
<b>Storage</b>	Store at -80 centigrade.
<b>Concentration</b>	>50 ug/mL as determined by microplate BCA method.
<b>Preparation</b>	Recombinant protein was captured through anti-DDK affinity column followed by conventional chromatography steps.
<b>Protein Pathways</b>	Spliceosome
<b>Full Length</b>	Full L.

## GENE INFORMATION

<b>Gene Name</b>	SLU7 SLU7 homolog, splicing factor [ Homo sapiens (human) ]
<b>Official Symbol</b>	SLU7
<b>Synonyms</b>	9G8; hSlu7
<b>Gene ID</b>	10569

 Tel: 1-631-559-9269 1-516-512-3133

 Email: [info@creative-biomart.com](mailto:info@creative-biomart.com)  Fax: 1-631-938-8127

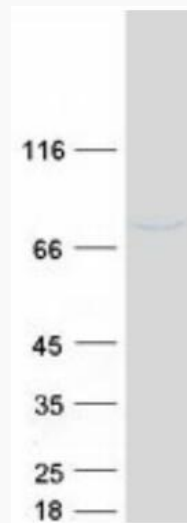
 45-1 Ramsey Road, Shirley, NY 11967, USA

mRNA Refseq [NM\\_006425.5](#)

Protein Refseq [NP\\_006416.3](#)

MIM [605974](#)

UniProt ID [O95391](#)



Coomassie blue staining of purified SLU7 protein.

 Tel: 1-631-559-9269 1-516-512-3133

 Email: [info@creative-biomart.com](mailto:info@creative-biomart.com)  Fax: 1-631-938-8127

 45-1 Ramsey Road, Shirley, NY 11967, USA