

# Recombinant Human SLU7 Protein, Myc/DDK-tagged, C13 and N15-labeled

Cat. No. SLU7-6429H Lot. No. (See product label)

## SPECIFICATION

<b>Product Overview</b>	SLU7 MS Standard C13 and N15-labeled recombinant protein (NP_006416) with a C-terminal MYC/DDK tag, was expressed in HEK293 cells.
<b>Species</b>	Human
<b>Source</b>	HEK293
<b>Description</b>	Pre-mRNA splicing occurs in two sequential transesterification steps. The protein encoded by this gene is a splicing factor that has been found to be essential during the second catalytic step in the pre-mRNA splicing process. It associates with the spliceosome and contains a zinc knuckle motif that is found in other splicing factors and is involved in protein-nucleic acid and protein-protein interactions.
<b>Molecular Mass</b>	68.3 kDa
<b>AA Sequence</b>	MSATVVDAVNAAPLSGSKEMSLEEPKKMTREDWRKKKELEEQRKLGNAPEVDEE GKDINPHIPQYISSVPWYIDPSKRPTLKHQRPQPEKQKQFSSSGEWYKRGVKENSVI TKYRKGACENCGAMTHKKKDCFERPRRVGAKFTGTNIAPDEHVQPQLMFDYDGKR DRWNGYNPEEHMKIVEEYAKVDLAKRTLKAQKLQEELASGKLVEQANSPKHQWGE EENPNSQTEKDHNSEDEDEDKYADDIDMPGQNFDSKRRTVRNLRIREEDIAKYLRNLD PNSAYYDPKTRAMRENPHYANAGKNPDEVSYAGDNFVRYTGDITISMAQTQLFAWEA YDKGSEVHLQADPTKLELLYKSFVKKEDFKEQQKESILEKYGGQEHLDAPPAELLL AQTEDYVEYSRHGTVIKQGERAVACSKYEEDVKIHNHHTHIWGSYWKEGRWGYKCC

Tel: 1-631-559-9269 1-516-512-3133

Email: [info@creative-biomart.com](mailto:info@creative-biomart.com) Fax: 1-631-938-8127

45-1 Ramsey Road, Shirley, NY 11967, USA

HSFFKYSYCTGEAGKEIVNSEECIINEITGEESVKKPQTLMELHQEKLKEEKKKKKKK  
 KKKHRKSSSDSDDEEKKHEKLLKALNAEEARLLHVKETMQIDERKRPYNSMYETRE  
 PTEEEMEAYRMKRQRPDDPMASFLGQTRTRPLEQKLISEEDLAANDILDYKDDDDK  
 V

**Purity** > 80% as determined by SDS-PAGE and Coomassie blue staining

**Stability** Stable for 3 months from receipt of products under proper storage and handling conditions.

**Storage** Store at -80 centigrade. Avoid repeated freeze-thaw cycles.

**Concentration** 50 µg/mL as determined by BCA

**Storage Buffer** 100 mM glycine, 25 mM Tris-HCl, pH 7.3.

## GENE INFORMATION

**Gene Name** [SLU7 SLU7 homolog, splicing factor \[ Homo sapiens \(human\) \]](#)

**Official Symbol** [SLU7](#)

**Synonyms** SLU7; SLU7 splicing factor homolog (*S. cerevisiae*); pre-mRNA-splicing factor SLU7; 9G8; zinc knuckle motif containing; splicing factor; step II splicing factor SLU7; hSlu7; MGC9280;

**Gene ID** [10569](#)

**mRNA Refseq** [NM\\_006425](#)

**Protein Refseq** [NP\\_006416](#)

 Tel: 1-631-559-9269 1-516-512-3133

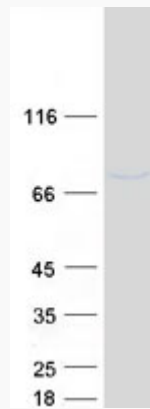
 Email: [info@creative-biomart.com](mailto:info@creative-biomart.com)  Fax: 1-631-938-8127

 45-1 Ramsey Road, Shirley, NY 11967, USA

**MIM** 605974

**UniProt ID** O95391

**SDS-PAGE**



 Tel: 1-631-559-9269 1-516-512-3133

 Email: [info@creative-biomart.com](mailto:info@creative-biomart.com)  Fax: 1-631-938-8127

 45-1 Ramsey Road, Shirley, NY 11967, USA