

Recombinant Human SLURP1 protein, His-tagged

Cat. No. SLURP1-122H Lot. No. (See product label)

SPECIFICATION

Product Overview	Recombinant Human SLURP1(Met1~Leu103) fused with His tag at N-terminal was expressed in E. coli.
Species	Human
Source	E.coli
ProteinLength	1-103 a.a.
Description	The protein encoded by this gene is a member of the Ly6/uPAR family but lacks a GPI-anchoring signal sequence. It is thought that this secreted protein contains antitumor activity. Mutations in this gene have been associated with Mal de Meleda, a rare autosomal recessive skin disorder. This gene maps to the same chromosomal region as several members of the Ly6/uPAR family of glycoprotein receptors.
Form	PBS, pH7.4, containing 0.01% SKL, 1mM DTT, 5% Trehalose and Proclin300.
Molecular Mass	15.0 kDa
Endotoxin	<1.0EU per 1g (determined by the LAL method)
Purity	> 95%
Applications	Positive Control; Immunogen; SDS-PAGE; WB.

 Tel: 1-631-559-9269 1-516-512-3133

 Email: info@creative-biomart.com  Fax: 1-631-938-8127

 45-1 Ramsey Road, Shirley, NY 11967, USA

Storage Avoid repeated freeze/thaw cycles. Store at 2-8 centigrade for one month. Aliquot and store at -80 centigrade for 12 months.

Reconstitution Reconstitute in PBS or others.

GENE INFORMATION

Gene Name [SLURP1 secreted LY6/PLAUR domain containing 1 \[Homo sapiens \]](#)

Official Symbol [SLURP1](#)

Synonyms SLURP1; secreted LY6/PLAUR domain containing 1; secreted Ly-6/uPAR-related protein 1; ANUP; ARS; ARS component B; ArsB; LY6LS; lymphocyte antigen 6 like secreted; MDM; SLURP-1; ARS(component B)-81/S; anti-neoplastic urinary protein; lymphocyte antigen 6-like secreted; secreted Ly6/uPAR related protein 1;

Gene ID [57152](#)

mRNA Refseq [NM_020427](#)

Protein Refseq [NP_065160](#)

MIM [606119](#)

UniProt ID [P55000](#)

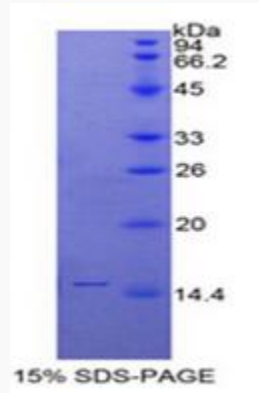
Chromosome Location 8q24.3

Function cytokine activity;

 Tel: 1-631-559-9269 1-516-512-3133

 Email: info@creative-biomart.com  Fax: 1-631-938-8127

 45-1 Ramsey Road, Shirley, NY 11967, USA



Tel: 1-631-559-9269 1-516-512-3133

Email: info@creative-biomart.com Fax: 1-631-938-8127

45-1 Ramsey Road, Shirley, NY 11967, USA