

Recombinant Human SLURP1 Protein (23-103 aa), His-tagged

Cat. No. SLURP1-2333H Lot. No. (See product label)

SPECIFICATION

Product Overview	Recombinant Human SLURP1 Protein (23-103 aa) is produced by Yeast expression system. This protein is fused with a 6xHis tag at the N-terminal. Research Area: Cardiovascular. Protein Description: Full Length of Mature Protein.
Species	Human
Source	Yeast
ProteinLength	23-103 aa
Description	Has an antitumor activity. Was found to be a marker of late differentiation of the skin. Implicated in maintaining the physiological and structural integrity of the keratinocyte layers of the skin.
Form	Tris-based buffer,50% glycerol
Molecular Mass	10.9 kDa
AA Sequence	LKCYTCKEPMTSASCRTITRCKPEDTACMTTLVTVEAEYPFNQSPVVTRSCSSSCVA TDPDSIGAAHLIFCCFRDLCNSEL
Purity	> 90% as determined by SDS-PAGE.
Notes	Repeated freezing and thawing is not recommended. Store working aliquots at 4 centigrade for up to one week.

 Tel: 1-631-559-9269 1-516-512-3133

 Email: info@creative-biomart.com  Fax: 1-631-938-8127

 45-1 Ramsey Road, Shirley, NY 11967, USA

Storage The shelf life is related to many factors, storage state, buffer ingredients, storage temperature and the stability of the protein itself. Generally, the shelf life of liquid form is 6 months at -20 centigrade/-80 centigrade. The shelf life of lyophilized form is 12 months at -20 centigrade/-80 centigrade.

Concentration A hardcopy of COA will be sent along with the products. Please refer to it for detailed information.

GENE INFORMATION

Gene Name [SLURP1 secreted LY6/PLAUR domain containing 1 \[Homo sapiens \]](#)

Official Symbol [SLURP1](#)

Synonyms SLURP1; ANUP; ARS; ARS component B; ArsB; LY6LS; MDM; SLURP-1; ARS(component B)-81/S;

Gene ID [57152](#)

mRNA Refseq [NM_020427](#)

Protein Refseq [NP_065160](#)

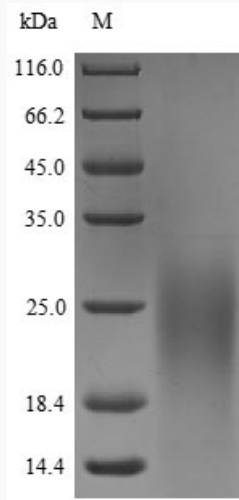
MIM [606119](#)

UniProt ID [P55000](#)

 Tel: 1-631-559-9269 1-516-512-3133

 Email: info@creative-biomart.com  Fax: 1-631-938-8127

 45-1 Ramsey Road, Shirley, NY 11967, USA



(Tris-Glycine gel) Discontinuous SDS-PAGE (reduced) with 5% enrichment gel and 15% separation gel.

 Tel: 1-631-559-9269 1-516-512-3133

 Email: info@creative-biomart.com  Fax: 1-631-938-8127

 45-1 Ramsey Road, Shirley, NY 11967, USA