

Recombinant Human SLURP1 Protein, Myc/DDK-tagged, C13 and N15-labeled

Cat. No. SLURP1-3135H **Lot. No.** (See product label)

SPECIFICATION

Product Overview	SLURP1 MS Standard C13 and N15-labeled recombinant protein (NP_065160) with a C-terminal MYC/DDK tag, was expressed in HEK293 cells.
Species	Human
Source	HEK293
Description	The protein encoded by this gene is a member of the Ly6/uPAR family but lacks a GPI-anchoring signal sequence. It is thought that this secreted protein contains antitumor activity. Mutations in this gene have been associated with Mal de Meleda, a rare autosomal recessive skin disorder. This gene maps to the same chromosomal region as several members of the Ly6/uPAR family of glycoprotein receptors.
Molecular Mass	11.2 kDa
AA Sequence	MASRWAVQLLLVAAWSMGCGEALKCYTCKEPMTSASCRTITRCKPEDTACMTTLV TVEAEYFPNQSPVVTRSCSSSCVATDPDSIGAAHLIFCCFRDLCNSELTRTRPLEQK LISEEDLAANDILDYKDDDDKV
Purity	> 80% as determined by SDS-PAGE and Coomassie blue staining
Stability	Stable for 3 months from receipt of products under proper storage and handling conditions.

 Tel: 1-631-559-9269 1-516-512-3133

 Email: info@creative-biomart.com  Fax: 1-631-938-8127

 45-1 Ramsey Road, Shirley, NY 11967, USA

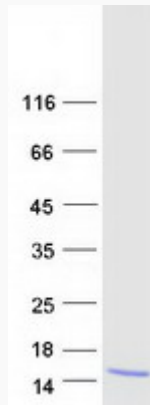
Storage	Store at -80 centigrade. Avoid repeated freeze-thaw cycles.
Concentration	50 µg/mL as determined by BCA
Storage Buffer	100 mM glycine, 25 mM Tris-HCl, pH 7.3.
GENE INFORMATION	
Gene Name	SLURP1 secreted LY6/PLAUR domain containing 1 [Homo sapiens (human)]
Official Symbol	SLURP1
Synonyms	SLURP1; secreted LY6/PLAUR domain containing 1; secreted Ly-6/uPAR-related protein 1; ANUP; ARS; ARS component B; ArsB; LY6LS; lymphocyte antigen 6 like secreted; MDM; SLURP-1; ARS(component B)-81/S; anti-neoplastic urinary protein; lymphocyte antigen 6-like secreted; secreted Ly6/uPAR related protein 1;
Gene ID	57152
mRNA Refseq	NM_020427
Protein Refseq	NP_065160
MIM	606119
UniProt ID	P55000

 Tel: 1-631-559-9269 1-516-512-3133

 Email: info@creative-biomart.com  Fax: 1-631-938-8127

 45-1 Ramsey Road, Shirley, NY 11967, USA

SDS-PAGE



 Tel: 1-631-559-9269 1-516-512-3133

 Email: info@creative-biomart.com  Fax: 1-631-938-8127

 45-1 Ramsey Road, Shirley, NY 11967, USA