

Recombinant Full Length Human SLURP1 Protein, C-Flag-tagged

Cat. No. SLURP1-801HFL **Lot. No.** (See product label)

SPECIFICATION

Product Overview	Recombinant Full Length Human SLURP1 Protein, fused to Flag-tag at C-terminus, was expressed in Mammalian cells.
Species	Human
Source	Mammalian Cells
Description	The protein encoded by this gene is a member of the Ly6/uPAR family but lacks a GPI-anchoring signal sequence. It is thought that this secreted protein contains antitumor activity. Mutations in this gene have been associated with Mal de Meleda, a rare autosomal recessive skin disorder. This gene maps to the same chromosomal region as several members of the Ly6/uPAR family of glycoprotein receptors.
Form	25 mM Tris HCl, pH 7.3, 100 mM glycine, 10% glycerol.
Molecular Mass	8.9 kDa
AA Sequence	MASRWAVQLLLVAAWSMGCGEALKCYTCKEPMTSASCRTITRCKPEDTACMTTLV TVEAEYPFNQSPVVT RSCSSSCVATDPDSIGAAHLIFCCFRDLCNSELTRTRPLEQKLISEEDLAANDILDYKD DDDKV
Purity	> 80% as determined by SDS-PAGE and Coomassie blue staining.

 Tel: 1-631-559-9269 1-516-512-3133

 Email: info@creative-biomart.com  Fax: 1-631-938-8127

 45-1 Ramsey Road, Shirley, NY 11967, USA

Stability	Stable for 12 months from the date of receipt of the product under proper storage and handling conditions. Avoid repeated freeze-thaw cycles.
Storage	Store at -80 centigrade.
Concentration	>50 ug/mL as determined by microplate BCA method.
Preparation	Recombinant protein was captured through anti-DDK affinity column followed by conventional chromatography steps.
Protein Families	Druggable Genome, Secreted Protein
Full Length	Full L.

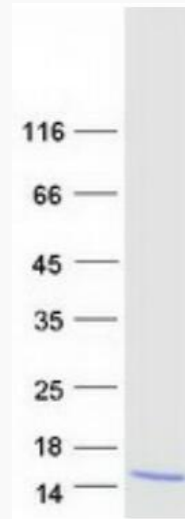
GENE INFORMATION

Gene Name	SLURP1 secreted LY6/PLAUR domain containing 1 [Homo sapiens (human)]
Official Symbol	SLURP1
Synonyms	ARS; MDM; ANUP; ArsB; LY6LS; LY6-MT
Gene ID	57152
mRNA Refseq	NM_020427.3
Protein Refseq	NP_065160.1
MIM	606119
UniProt ID	P55000

 Tel: 1-631-559-9269 1-516-512-3133

 Email: info@creative-biomart.com  Fax: 1-631-938-8127

 45-1 Ramsey Road, Shirley, NY 11967, USA



Coomassie blue staining of purified SLURP1 protein.

 Tel: 1-631-559-9269 1-516-512-3133

 Email: info@creative-biomart.com  Fax: 1-631-938-8127

 45-1 Ramsey Road, Shirley, NY 11967, USA