

Recombinant Full Length Human SMAD1 Protein, N-His-tagged

Cat. No. SMAD1-106HFL **Lot. No.** (See product label)

SPECIFICATION

Product Overview Recombinant Full Length Human SMAD1 Protein, fused to His-tag at N-terminus, was expressed in E. coli.

Species Human

Source E.coli

Description The protein encoded by this gene belongs to the SMAD, a family of proteins similar to the gene products of the Drosophila gene 'mothers against decapentaplegic' (Mad) and the C. elegans gene Sma. SMAD proteins are signal transducers and transcriptional modulators that mediate multiple signaling pathways. This protein mediates the signals of the bone morphogenetic proteins (BMPs), which are involved in a range of biological activities including cell growth, apoptosis, morphogenesis, development and immune responses. In response to BMP ligands, this protein can be phosphorylated and activated by the BMP receptor kinase. The phosphorylated form of this protein forms a complex with SMAD4, which is important for its function in the transcription regulation. This protein is a target for SMAD-specific E3 ubiquitin ligases, such as SMURF1 and SMURF2, and undergoes ubiquitination and proteasome-mediated degradation. Alternatively spliced transcript variants encoding the same protein have been observed.

Form 25mM Tris, pH8.0, 150 mM NaCl, 10% glycerol, 1% Sarkosyl.

Molecular Mass 52.1 kDa

 Tel: 1-631-559-9269 1-516-512-3133

 Email: info@creative-biomart.com  Fax: 1-631-938-8127

 45-1 Ramsey Road, Shirley, NY 11967, USA

AA Sequence	A DNA sequence encoding human full-length SMAD1.
Purity	> 80% as determined by SDS-PAGE and Coomassie blue staining.
Stability	Stable for 12 months from the date of receipt of the product under proper storage and handling conditions. Avoid repeated freeze-thaw cycles.
Storage	Store at -80 centigrade.
Concentration	>50 ug/mL as determined by microplate BCA method.
Protein Families	Cancer stem cells, Druggable Genome, ES Cell Differentiation/IPS, Stem cell relevant signaling - JAK/STAT signaling pathway, Stem cell relevant signaling - TGFb/BMP signaling pathway, Transcription Factors
Protein Pathways	TGF-beta signaling pathway
Full Length	Full L.

GENE INFORMATION

Gene Name	SMAD1 SMAD family member 1 [Homo sapiens (human)]
Official Symbol	SMAD1
Synonyms	BSP1; JV41; BSP-1; JV4-1; MADH1; MADR1
Gene ID	4086
mRNA Refseq	NM_005900.3

 Tel: 1-631-559-9269 1-516-512-3133

 Email: info@creative-biomart.com  Fax: 1-631-938-8127

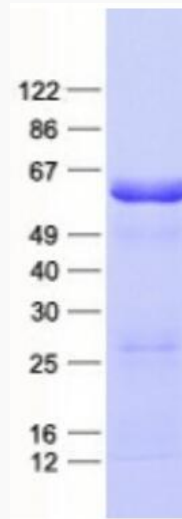
 45-1 Ramsey Road, Shirley, NY 11967, USA

Protein Refseq NP_005891.1

MIM 601595

UniProt ID Q15797

SDS-PAGE



 Tel: 1-631-559-9269 1-516-512-3133

 Email: info@creative-biomart.com  Fax: 1-631-938-8127

 45-1 Ramsey Road, Shirley, NY 11967, USA