

Recombinant Human SMAD1 Protein, MYC/DDK-tagged, C13 and N15-labeled

Cat. No. SMAD1-333H **Lot. No.** (See product label)

SPECIFICATION

Product Overview

SMAD1 MS Standard C13 and N15-labeled recombinant protein (NP_001003688) with a C-terminal MYC/DDK tag, was expressed in HEK293 cells.

Species

Human

Source

HEK293

Description

The protein encoded by this gene belongs to the SMAD, a family of proteins similar to the gene products of the Drosophila gene 'mothers against decapentaplegic' (Mad) and the C. elegans gene Sma. SMAD proteins are signal transducers and transcriptional modulators that mediate multiple signaling pathways. This protein mediates the signals of the bone morphogenetic proteins (BMPs), which are involved in a range of biological activities including cell growth, apoptosis, morphogenesis, development and immune responses. In response to BMP ligands, this protein can be phosphorylated and activated by the BMP receptor kinase. The phosphorylated form of this protein forms a complex with SMAD4, which is important for its function in the transcription regulation. This protein is a target for SMAD-specific E3 ubiquitin ligases, such as SMURF1 and SMURF2, and undergoes ubiquitination and proteasome-mediated degradation. Alternatively spliced transcript variants encoding the same protein have been observed. [provided by RefSeq, Jul 2008]

Molecular Mass

52.3 kDa

 Tel: 1-631-559-9269 1-516-512-3133

 Email: info@creative-biomart.com  Fax: 1-631-938-8127

 45-1 Ramsey Road, Shirley, NY 11967, USA

AA Sequence

MNVTSLFSFTSPAVKRLLGWKQGDEEEKWAEKAVDALVKKLLKGGAMEELEKALS
 CPGQPSNCVTIPRSLDGRLQVSHRKGLPHVIYCRVWRWPDQLQSHHELKPLECCEFP
 FGSKQKEVCINPYHYKRVESPVLPVLPVPRHSEYNPQHSLLAQFRNLGQNEPHMPL
 NATFPDSFQQPNSHPPHSPNSSYPNSPGSSSSTYPHSPTSSDPGSPFQMPADTP
 PPAYLPPEDPMTQDGSQPMDTNMMAPPLPSEINRGDVQAVAYECPKHWCSSIVYYE
 LNNRVGEAFHASSTSVLVDGFTDPSNNKNRFCLGLLSNVNRNSTIENTRRHIGKGVH
 LYYVGGEVYAECLSDSSIFVQSRNCNYHHGFHPTTVCKIPSGCSLKIFNNQEFAQLL
 AQSVNHGFETVYELTKMCTIRMSFVKGWGAEYHRQDVTSTPCWIEIHLHGPLQWLD
 KVLTMGSPHNPISSVSTRTRPLEQKLISEEDLAANDILDYKDDDDKV

Purity > 80% as determined by SDS-PAGE and Coomassie blue staining

Stability Stable for 3 months from receipt of products under proper storage and handling conditions.

Storage Store at -80 centigrade. Avoid repeated freeze-thaw cycles.

Concentration 50 µg/mL as determined by BCA

Storage Buffer 100 mM glycine, 25 mM Tris-HCl, pH 7.3.

GENE INFORMATION

Gene Name SMAD1 SMAD family member 1 [Homo sapiens (human)]

Official Symbol SMAD1

Synonyms SMAD1; SMAD family member 1; MAD, mothers against decapentaplegic homolog 1 (Drosophila), MADH1, SMAD, mothers against DPP homolog 1 (Drosophila); mothers against decapentaplegic homolog 1; JV4 1; MADR1; MAD homolog 1; Mad-related protein 1; TGF-beta signaling protein 1; mothers against DPP homolog 1; SMAD,

 Tel: 1-631-559-9269 1-516-512-3133

 Email: info@creative-biomart.com  Fax: 1-631-938-8127

 45-1 Ramsey Road, Shirley, NY 11967, USA

mothers against DPP homolog 1; MAD, mothers against decapentaplegic homolog 1; transforming growth factor-beta signaling protein 1; transforming growth factor-beta-signaling protein 1; BSP1; JV41; BSP-1; JV4-1; MADH1;

Gene ID 4086

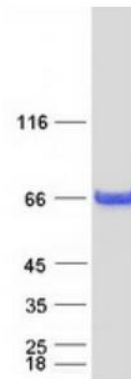
mRNA Refseq NM_001003688

Protein Refseq NP_001003688

MIM 601595

UniProt ID Q15797

SDS-PAGE



 Tel: 1-631-559-9269 1-516-512-3133

 Email: info@creative-biomart.com  Fax: 1-631-938-8127

 45-1 Ramsey Road, Shirley, NY 11967, USA