

Recombinant Human SMAD1 Protein (Asp259-Ser462), N-His tagged

Cat. No. SMAD1-5865H Lot. No. (See product label)

SPECIFICATION

Product Overview	Recombinant human SMAD1 (Asp259-Ser462) fused with the N-His tag was expressed in E. coli.
Species	Human
Source	E.coli
ProteinLength	Asp259-Ser462
Form	Lyophilized powder/frozen liquid
Molecular Mass	25.42 kDa
Purity	> 90 % as determined by SDS-PAGE
Notes	For research use only.
Storage	Use a manual defrost freezer and avoid repeated freeze thaw cycles. Store at 2 to 8 centigrade for one week. Store at -20 to -80 centigrade for twelve months from the date of receipt.
Storage Buffer	0.01M PBS, pH 7.4, 0.02 % NLS
Reconstitution	Reconstitute in sterile water for a stock solution.

 Tel: 1-631-559-9269 1-516-512-3133

 Email: info@creative-biomart.com  Fax: 1-631-938-8127

 45-1 Ramsey Road, Shirley, NY 11967, USA

Shipping They are shipped out with dry ice/blue ice unless customers require otherwise.

GENE INFORMATION

Gene Name SMAD1 SMAD family member 1 [Homo sapiens (human)]

Official Symbol SMAD1

Synonyms

SMAD1; SMAD family member 1; MAD, mothers against decapentaplegic homolog 1 (Drosophila), MADH1, SMAD, mothers against DPP homolog 1 (Drosophila); mothers against decapentaplegic homolog 1; JV4 1; MADR1; MAD homolog 1; Mad-related protein 1; TGF-beta signaling protein 1; mothers against DPP homolog 1; SMAD, mothers against DPP homolog 1; MAD, mothers against decapentaplegic homolog 1; transforming growth factor-beta signaling protein 1; transforming growth factor-beta-signaling protein 1; BSP1; JV41; BSP-1; JV4-1; MADH1;

Gene ID 4086

mRNA Refseq NM_001003688

Protein Refseq NP_001003688

MIM 601595

UniProt ID Q15797

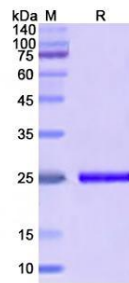
 Tel: 1-631-559-9269 1-516-512-3133

 Email: info@creative-biomart.com  Fax: 1-631-938-8127

 45-1 Ramsey Road, Shirley, NY 11967, USA



SDS-PAGE



Tel: 1-631-559-9269 1-516-512-3133

Email: info@creative-biomart.com Fax: 1-631-938-8127

45-1 Ramsey Road, Shirley, NY 11967, USA