

Recombinant Cattle SMAD1 protein, His & T7-tagged

Cat. No. SMAD1-656C Lot. No. (See product label)

SPECIFICATION

Product Overview	Recombinant Cattle SMAD1 aa. (His270~Ser465 (Accession # Q1JQA2)) fused with N-terminal His & T7 tag was produced in E. coli cells.
Species	Cattle
Source	E.coli
ProteinLength	His270~Ser465
Form	Freeze-dried powder
Molecular Mass	Predicted Molecular Mass: 26.0kDa
Endotoxin	<1.0EU per 1g (determined by the LAL method)
Purity	>95%
Characteristic	The isoelectric point is 7.7.
Applications	SDS-PAGE; WB; ELISA; IP
Stability	The thermal stability is described by the loss rate. The loss rate was determined by accelerated thermal degradation test, that is, incubate the protein at 37°C for 48h, and no obvious degradation and precipitation were observed. The loss rate is less than 5% within the expiration date under appropriate storage condition.

 Tel: 1-631-559-9269 1-516-512-3133

 Email: info@creative-biomart.com  Fax: 1-631-938-8127

 45-1 Ramsey Road, Shirley, NY 11967, USA

Storage	Avoid repeated freeze/thaw cycles. Store at 2-8°C for one month. Aliquot and store at -80°C for 12 months.
Storage buffer	Supplied as lyophilized form in PBS, pH7.4, containing 5% trehalose, 0.01% sarcosyl.
Reconstitution	Reconstitute in sterile PBS, pH7.2-pH7.4.

GENE INFORMATION

Gene Name	SMAD1 SMAD family member 1 [<i>Bos taurus</i> (cattle)]
Official Symbol	SMAD1
Synonyms	SMAD1; mothers against decapentaplegic homolog 1; MAD homolog 1; SMAD 1; SMAD, mothers against DPP homolog 1; Sma- and Mad-related protein 1; mad-related protein 1; mothers against DPP homolog 1
Gene ID	540488
mRNA Refseq	NM_001076223.2
Protein Refseq	NP_001069691.2
UniProt ID	Q1JQA2

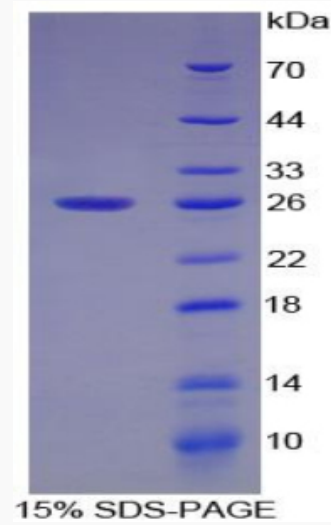
 Tel: 1-631-559-9269 1-516-512-3133

 Email: info@creative-biomart.com  Fax: 1-631-938-8127

 45-1 Ramsey Road, Shirley, NY 11967, USA



SDS-PAGE



Tel: 1-631-559-9269 1-516-512-3133

Email: info@creative-biomart.com Fax: 1-631-938-8127

45-1 Ramsey Road, Shirley, NY 11967, USA