

Active Recombinant Full Length Human SMAD2 Protein, C-Flag-tagged

Cat. No. SMAD2-350HFL Lot. No. (See product label)

SPECIFICATION

Product Overview

Recombinant Full Length Human SMAD2 Protein, fused to Flag-tag at C-terminus, was expressed in Mammalian cells.

Species

Human

Source

Mammalian Cells

Description

The protein encoded by this gene belongs to the SMAD, a family of proteins similar to the gene products of the Drosophila gene 'mothers against decapentaplegic' (Mad) and the C. elegans gene Sma. SMAD proteins are signal transducers and transcriptional modulators that mediate multiple signaling pathways. This protein mediates the signal of the transforming growth factor (TGF)-beta, and thus regulates multiple cellular processes, such as cell proliferation, apoptosis, and differentiation. This protein is recruited to the TGF-beta receptors through its interaction with the SMAD anchor for receptor activation (SARA) protein. In response to TGF-beta signal, this protein is phosphorylated by the TGF-beta receptors. The phosphorylation induces the dissociation of this protein with SARA and the association with the family member SMAD4. The association with SMAD4 is important for the translocation of this protein into the nucleus, where it binds to target promoters and forms a transcription repressor complex with other cofactors. This protein can also be phosphorylated by activin type 1 receptor kinase, and mediates the signal from the activin. Alternatively spliced transcript variants have been observed for this gene.

 Tel: 1-631-559-9269 1-516-512-3133

 Email: info@creative-biomart.com  Fax: 1-631-938-8127

 45-1 Ramsey Road, Shirley, NY 11967, USA

Form	25 mM Tris HCl, pH 7.3, 100 mM glycine, 10% glycerol.
Bio-activity	Co-immunoprecipitation
Molecular Mass	52.1 kDa
AA Sequence	<p>MSSILPFTPPVVKRLLGWKKSAGGSGGAGGGEQNGQEEKWCEKAVKSLVKKLKKT GRLELEKAITTQNC NTKCVTIPSTCSEIWGLSTPNTIDQWDTTGLYSFSEQTRSLD GRLQVSHRKGPHVIYCRLWRWPDLSH HELKAIENCEYAFNLKKDEVCPNPHY QRVETPVLPPVLVPRHTEILTELPPLDDYTHSIPENTNFPAGI EPQSNYIPETPPPGYI SEDGETSDQQLNQSMGTGSPAELSPPTLSPVNHSLDLQPVTYSEPAFWCSIAYY EL NQRVGETFHASQPSLTVDGFTDPSNSERFCLGLLSNVNRNATVEMTRRHIGRGVRL YYIGGEVFAECL SDSAIFVQSPNCNQRYGWHPATVCKIPPGCNLKIFNNQEFAALLA QSVNQGFEAVYQLTRMCTIRMSFVK GWGAEYRRQTVTSTPCWIELHLNGLPLQWLDKVLTMGSPSVRCSSMSTRTRPLEQ KLISEEDLAANDILDYKDDDDKV</p>
Purity	> 80% as determined by SDS-PAGE and Coomassie blue staining.
Stability	Stable for 12 months from the date of receipt of the product under proper storage and handling conditions. Avoid repeated freeze-thaw cycles.
Storage	Store at -80 centigrade.
Concentration	>50 ug/mL as determined by microplate BCA method.
Preparation	Recombinant protein was captured through anti-DDK affinity column followed by conventional chromatography steps.
Protein Families	Cancer stem cells, Druggable Genome, Embryonic stem cells, ES Cell

 Tel: 1-631-559-9269 1-516-512-3133

 Email: info@creative-biomart.com  Fax: 1-631-938-8127

 45-1 Ramsey Road, Shirley, NY 11967, USA

Differentiation/IPS, Stem cell relevant signaling - JAK/STAT signaling pathway, Stem cell relevant signaling - TGFb/BMP signaling pathway, Transcription Factors

Protein Pathways

Adherens junction, Cell cycle, Colorectal cancer, Pancreatic cancer, Pathways in cancer, TGF-beta signaling pathway, Wnt signaling pathway

Full Length

Full L.

GENE INFORMATION

Gene Name

SMAD2 SMAD family member 2 [Homo sapiens (human)]

Official Symbol

SMAD2

Synonyms

JV18; LDS6; CHTD8; MADH2; MADR2; JV18-1; hMAD-2; hSMAD2

Gene ID

4087

mRNA Refseq

NM_005901.6

Protein Refseq

NP_005892.1

MIM

601366

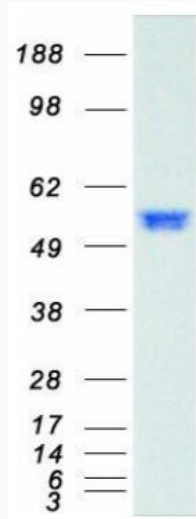
UniProt ID

Q15796

 Tel: 1-631-559-9269 1-516-512-3133

 Email: info@creative-biomart.com  Fax: 1-631-938-8127

 45-1 Ramsey Road, Shirley, NY 11967, USA



Coomassie blue staining of purified SMAD2 protein.

 Tel: 1-631-559-9269 1-516-512-3133

 Email: info@creative-biomart.com  Fax: 1-631-938-8127

 45-1 Ramsey Road, Shirley, NY 11967, USA