

# Recombinant Human SMAD2 Protein (Lys20-Ile355), N-His tagged

**Cat. No.** SMAD2-5866H    **Lot. No.** (See product label)

## SPECIFICATION

<b>Product Overview</b>	Recombinant human SMAD2 (Lys20-Ile355) fused with the N-His tag was expressed in E. coli.
<b>Species</b>	Human
<b>Source</b>	E.coli
<b>ProteinLength</b>	Lys20-Ile355
<b>Form</b>	Lyophilized powder/frozen liquid
<b>Molecular Mass</b>	39.78 kDa
<b>Purity</b>	> 90 % as determined by SDS-PAGE
<b>Notes</b>	For research use only.
<b>Storage</b>	Use a manual defrost freezer and avoid repeated freeze thaw cycles. Store at 2 to 8 centigrade for one week. Store at -20 to -80 centigrade for twelve months from the date of receipt.
<b>Storage Buffer</b>	0.01M PBS, pH 7.4, 0.02 % NLS
<b>Reconstitution</b>	Reconstitute in sterile water for a stock solution.

 Tel: 1-631-559-9269    1-516-512-3133

 Email: [info@creative-biomart.com](mailto:info@creative-biomart.com)     Fax: 1-631-938-8127

 45-1 Ramsey Road, Shirley, NY 11967, USA

**Shipping** They are shipped out with dry ice/blue ice unless customers require otherwise.

## GENE INFORMATION

**Gene Name** SMAD2 SMAD family member 2 [ Homo sapiens (human) ]

**Official Symbol** SMAD2

**Synonyms** SMAD2; SMAD family member 2; MAD, mothers against decapentaplegic homolog 2 (Drosophila), MADH2, SMAD, mothers against DPP homolog 2 (Drosophila); mothers against decapentaplegic homolog 2; JV18 1; MADR2; MAD homolog 2; mother against DPP homolog 2; Sma- and Mad-related protein 2; SMAD, mothers against DPP homolog 2; JV18; MADH2; JV18-1; hMAD-2; hSMAD2; MGC22139; MGC34440;

**Gene ID** 4087

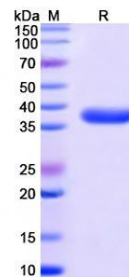
**mRNA Refseq** NM\_001003652

**Protein Refseq** NP\_001003652

**MIM** 601366

**UniProt ID** Q15796

### SDS-PAGE



Tel: 1-631-559-9269 1-516-512-3133

Email: [info@creative-biomart.com](mailto:info@creative-biomart.com) Fax: 1-631-938-8127

45-1 Ramsey Road, Shirley, NY 11967, USA