

Active Recombinant Full Length Human SMAD3 Protein, GST-tagged

Cat. No. SMAD3-1973HF Lot. No. (See product label)

SPECIFICATION

Product Overview	Full-length human Smad3 [1-425(end) amino acids of accession number NP_005893.1] was expressed as N-terminal GST-fusion protein (75 kDa) using E.coli expression system. GST-Smad3 was purified by using glutathione sepharose chromatography
Species	Human
Source	E.coli
ProteinLength	1-425(end)
Form	50 mM Tris-HCl, 150 mM NaCl, 0.05% Brij35, 1 mM DTT, 10% glycerol, pH7.5
Bio-activity	The phosphorylational ability of the protein was determined by ELISA. The substrate protein was incubated with the indicated enzyme, and after stopping kinase reaction by EDTA, the reaction solution was transferred into glutathione-coated plate. Phosphorylation was detected by anti-phospho antibody and HRP-labeled anti-rabbit IgG (or HRP-labeled anti-mouse IgG).
Purity	61%
Applications	SDS-PAGE
Storage	Store at -80C. Avoid repeating freeze-thaws.

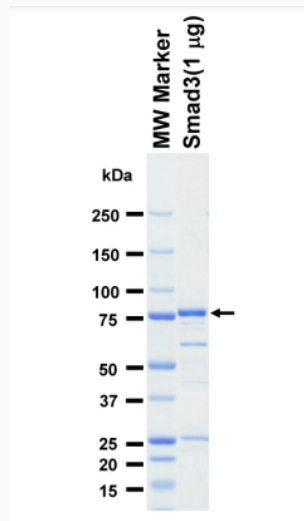
 Tel: 1-631-559-9269 1-516-512-3133

 Email: info@creative-biomart.com  Fax: 1-631-938-8127

 45-1 Ramsey Road, Shirley, NY 11967, USA

GENE INFORMATION

Gene Name	SMAD family member 3
Official Symbol	SMAD3
Synonyms	MADH3; JV15-2; HsT17436
Protein Refseq	NP_005893.1
UniProt ID	Q9GKR4

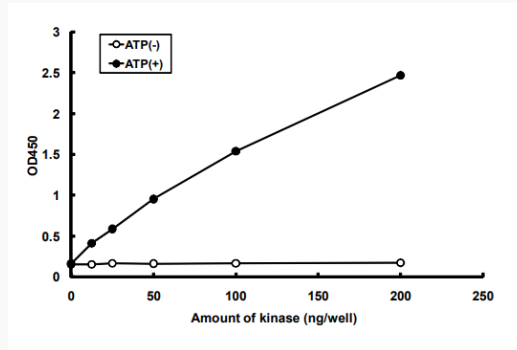
SDS-PAGE

The purity was assessed by SDS-PAGE/CBB staining.

 Tel: 1-631-559-9269 1-516-512-3133

 Email: info@creative-biomart.com  Fax: 1-631-938-8127

 45-1 Ramsey Road, Shirley, NY 11967, USA



Activity data

The phosphorylational ability of the protein was determined by ELISA. The substrate protein was incubated with the indicated enzyme, and after stopping kinase reaction by EDTA, the reaction solution was transferred into glutathione-coated plate. Phosphorylation was detected by anti-phospho antibody and HRP-labeled anti-rabbit IgG (or HRP-labeled anti-mouse IgG).

 Tel: 1-631-559-9269 1-516-512-3133

 Email: info@creative-biomart.com  Fax: 1-631-938-8127

 45-1 Ramsey Road, Shirley, NY 11967, USA