

Recombinant Human SMAD3 Protein, Myc/DDK-tagged, C13 and N15-labeled

Cat. No. SMAD3-4788H Lot. No. (See product label)

SPECIFICATION

Product Overview

SMAD3 MS Standard C13 and N15-labeled recombinant protein (NP_005893) with a C-terminal MYC/DDK tag, was expressed in HEK293 cells.

Species

Human

Source

HEK293

Description

The SMAD family of proteins are a group of intracellular signal transducer proteins similar to the gene products of the Drosophila gene 'mothers against decapentaplegic' (Mad) and the C. elegans gene Sma. The SMAD3 protein functions in the transforming growth factor-beta signaling pathway, and transmits signals from the cell surface to the nucleus, regulating gene activity and cell proliferation. It also functions as a tumor suppressor. Mutations in this gene are associated with aneurysms-osteoarthritis syndrome and Loeys-Dietz Syndrome 3.

Molecular Mass

47.9 kDa

AA Sequence

MSSILPFTPIIVKRLLGWKKGEQNGQEEKWCEKAVKSLVKLLKKTGQLDELEKAITT
 QNVNTKCITIPRSLDGRLQVSHRKGLPHVIYCRLWRWPDLHSHHELAMELCEFAF
 NMKKDEVCVNPHYHYQRVETPVLPPVLVPRHTEIPAEPPLDDYSHSIPENTNFPAGIE
 PQSNIPETPPPGYLSEGETSDHQMNHSM DAGSPNLSPNMSPAHHNLDLQPVTY
 CEPAFWCISISYYELNQRVGETFHASQPSMTVDGFTDPSNSERFCLGLLSNVNRNAA
 VELTRRHIGRGRVRLYYIGGEVFAECLSDSAIFVQSPNCNQRYPGWHPATVCKIPPGCN

 Tel: 1-631-559-9269 1-516-512-3133

 Email: info@creative-biomart.com  Fax: 1-631-938-8127

 45-1 Ramsey Road, Shirley, NY 11967, USA

LKIFNNQEFAALLAQSVNQGFEAVYQLTRMCTIRMSFVKGWGAEYRRQTVTSTPCW
 IELHLNGPLQWLDKVLTMGSPSIRCSSVSTRTRPLEQKLISEEDLAANDILDYKDDD
 DKV

Purity > 80% as determined by SDS-PAGE and Coomassie blue staining

Stability Stable for 3 months from receipt of products under proper storage and handling conditions.

Storage Store at -80 centigrade. Avoid repeated freeze-thaw cycles.

Concentration 50 µg/mL as determined by BCA

Storage Buffer 100 mM glycine, 25 mM Tris-HCl, pH 7.3.

GENE INFORMATION

Gene Name SMAD3 SMAD family member 3 [Homo sapiens (human)]

Official Symbol SMAD3

Synonyms SMAD3; SMAD family member 3; MAD, mothers against decapentaplegic homolog 3 (Drosophila), MADH3, SMAD, mothers against DPP homolog 3 (Drosophila); mothers against decapentaplegic homolog 3; HsT17436; JV15 2; mad3; hMAD-3; hSMAD3; MAD homolog 3; mad homolog JV15-2; mad protein homolog; mothers against DPP homolog 3; SMA- and MAD-related protein 3; SMAD, mothers against DPP homolog 3; MAD, mothers against decapentaplegic homolog 3; LDS1C; MADH3; JV15-2; HSPC193; MGC60396; DKFZp586N0721; DKFZp686J10186;

Gene ID 4088

 Tel: 1-631-559-9269 1-516-512-3133

 Email: info@creative-biomart.com  Fax: 1-631-938-8127

 45-1 Ramsey Road, Shirley, NY 11967, USA

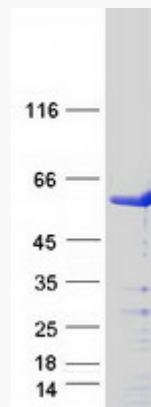
mRNA Refseq [NM_005902](#)

Protein Refseq [NP_005893](#)

MIM [603109](#)

UniProt ID [P84022](#)

SDS-PAGE



 Tel: 1-631-559-9269 1-516-512-3133

 Email: info@creative-biomart.com  Fax: 1-631-938-8127

 45-1 Ramsey Road, Shirley, NY 11967, USA