

Recombinant Human SMAD3 Protein (Asp220-Ser425), N-His tagged

Cat. No. SMAD3-5867H Lot. No. (See product label)

SPECIFICATION

| | |
|-------------------------|---|
| Product Overview | Recombinant human SMAD3 (Asp220-Ser425) fused with the N-His tag was expressed in E. coli. |
| Species | Human |
| Source | E.coli |
| ProteinLength | Asp220-Ser425 |
| Form | Lyophilized powder/frozen liquid |
| Molecular Mass | 25.52 kDa |
| Purity | > 90 % as determined by SDS-PAGE |
| Notes | For research use only. |
| Storage | Use a manual defrost freezer and avoid repeated freeze thaw cycles. Store at 2 to 8 centigrade for one week. Store at -20 to -80 centigrade for twelve months from the date of receipt. |
| Storage Buffer | 0.01M PBS, pH 7.4, 0.02 % NLS |
| Reconstitution | Reconstitute in sterile water for a stock solution. |

 Tel: 1-631-559-9269 1-516-512-3133

 Email: info@creative-biomart.com  Fax: 1-631-938-8127

 45-1 Ramsey Road, Shirley, NY 11967, USA

Shipping They are shipped out with dry ice/blue ice unless customers require otherwise.

GENE INFORMATION

Gene Name SMAD3 SMAD family member 3 [Homo sapiens (human)]

Official Symbol SMAD3

Synonyms SMAD3; SMAD family member 3; MAD, mothers against decapentaplegic homolog 3 (Drosophila), MADH3, SMAD, mothers against DPP homolog 3 (Drosophila); mothers against decapentaplegic homolog 3; HsT17436; JV15 2; mad3; hMAD-3; hSMAD3; MAD homolog 3; mad homolog JV15-2; mad protein homolog; mothers against DPP homolog 3; SMA- and MAD-related protein 3; SMAD, mothers against DPP homolog 3; MAD, mothers against decapentaplegic homolog 3; LDS1C; MADH3; JV15-2; HSPC193; MGC60396; DKFZp586N0721; DKFZp686J10186;

Gene ID 4088

mRNA Refseq NM_001145102

Protein Refseq NP_001138574

MIM 603109

UniProt ID P84022

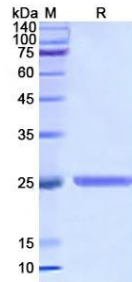
 Tel: 1-631-559-9269 1-516-512-3133

 Email: info@creative-biomart.com  Fax: 1-631-938-8127

 45-1 Ramsey Road, Shirley, NY 11967, USA



SDS-PAGE



Tel: 1-631-559-9269 1-516-512-3133

Email: info@creative-biomart.com Fax: 1-631-938-8127

45-1 Ramsey Road, Shirley, NY 11967, USA