

# Recombinant Human SMAD4 Protein (Pro139-Asp332), N-His tagged

Cat. No. SMAD4-5869H    Lot. No. (See product label)

## SPECIFICATION

<b>Product Overview</b>	Recombinant human SMAD4 (Pro139-Asp332) fused with the N-His tag was expressed in E. coli.
<b>Species</b>	Human
<b>Source</b>	E.coli
<b>ProteinLength</b>	Pro139-Asp332
<b>Form</b>	Lyophilized powder/frozen liquid
<b>Molecular Mass</b>	23.26 kDa
<b>Purity</b>	> 90 % as determined by SDS-PAGE
<b>Notes</b>	For research use only.
<b>Storage</b>	Use a manual defrost freezer and avoid repeated freeze thaw cycles. Store at 2 to 8 centigrade for one week. Store at -20 to -80 centigrade for twelve months from the date of receipt.
<b>Storage Buffer</b>	0.01M PBS, pH 7.4, 0.02 % NLS
<b>Reconstitution</b>	Reconstitute in sterile water for a stock solution.

 Tel: 1-631-559-9269    1-516-512-3133

 Email: [info@creative-biomart.com](mailto:info@creative-biomart.com)     Fax: 1-631-938-8127

 45-1 Ramsey Road, Shirley, NY 11967, USA

**Shipping** They are shipped out with dry ice/blue ice unless customers require otherwise.

## GENE INFORMATION

**Gene Name** SMAD4 SMAD family member 4 [ Homo sapiens (human) ]

**Official Symbol** SMAD4

**Synonyms** SMAD4; SMAD family member 4; MAD, mothers against decapentaplegic homolog 4 (Drosophila), MADH4, SMAD, mothers against DPP homolog 4 (Drosophila); mothers against decapentaplegic homolog 4; DPC4; MAD homolog 4; SMAD, mothers against DPP homolog 4; deleted in pancreatic carcinoma locus 4; deletion target in pancreatic carcinoma 4; mothers against decapentaplegic, Drosophila, homolog of, 4; JIP; MADH4; MYHRS;

**Gene ID** 4089

**mRNA Refseq** NM\_005359

**Protein Refseq** NP\_005350

**MIM** 600993

**UniProt ID** Q13485

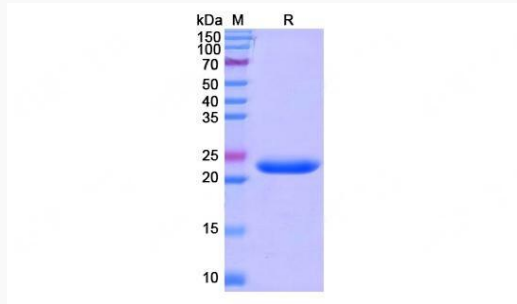
 Tel: 1-631-559-9269 1-516-512-3133

 Email: [info@creative-biomart.com](mailto:info@creative-biomart.com)  Fax: 1-631-938-8127

 45-1 Ramsey Road, Shirley, NY 11967, USA



SDS-PAGE



Tel: 1-631-559-9269 1-516-512-3133

Email: [info@creative-biomart.com](mailto:info@creative-biomart.com) Fax: 1-631-938-8127

45-1 Ramsey Road, Shirley, NY 11967, USA