

Recombinant Human SMAD5 Protein, His-tagged

Cat. No. SMAD5-303H Lot. No. (See product label)

SPECIFICATION

Product Overview	Recombinant Human SMAD5(Gly210~Val464) fused with His tag at N-terminal was expressed in E. coli.
Species	Human
Source	E.coli
ProteinLength	Gly210~Val464
Description	The protein encoded by this gene is involved in the transforming growth factor beta signaling pathway that results in an inhibition of the proliferation of hematopoietic progenitor cells. The encoded protein is activated by bone morphogenetic proteins type 1 receptor kinase, and may be involved in cancer. Alternative splicing results in multiple transcript variants.
Form	PBS, pH7.4, containing 0.01% SKL, 1mM DTT, 5% Trehalose and Proclin300.
Molecular Mass	32.3kDa
Endotoxin	<1.0EU per 1ug (determined by the LAL method)
Purity	> 95%
Applications	Positive Control; Immunogen; SDS-PAGE; WB. If bio-activity of the protein is needed, please check active protein

 Tel: 1-631-559-9269 1-516-512-3133

 Email: info@creative-biomart.com  Fax: 1-631-938-8127

 45-1 Ramsey Road, Shirley, NY 11967, USA

Stability The thermal stability is described by the loss rate. The loss rate was determined by accelerated thermal degradation test, that is, incubate the protein at 37 centigrade for 48h, and no obvious degradation and precipitation were observed. The loss rate is less than 5% within the expiration date under appropriate storage condition.

Storage Avoid repeated freeze/thaw cycles. Store at 2-8 centigrade for one month. Aliquot and store at -80 centigrade for 12 months.

Reconstitution Reconstitute in PBS or others

GENE INFORMATION

Gene Name [SMAD5 SMAD family member 5 \[Homo sapiens \]](#)

Official Symbol [SMAD5](#)

Synonyms SMAD5; SMAD family member 5; MAD, mothers against decapentaplegic homolog 5 (Drosophila) , MADH5, SMAD, mothers against DPP homolog 5 (Drosophila); mothers against decapentaplegic homolog 5; Dwfc; JV5 1; SMA- and MAD-related protein 5; SMAD, mothers against DPP homolog 5; MAD, mothers against decapentaplegic homolog 5; mothers against decapentaplegic, drosophila, homolog of, 5; DWFC; JV5-1; MADH5; DKFZp781C1895; DKFZp781O1323;

Gene ID [4090](#)

mRNA Refseq [NM_001001419](#)

Protein Refseq [NP_001001419](#)

MIM [603110](#)

 Tel: 1-631-559-9269 1-516-512-3133

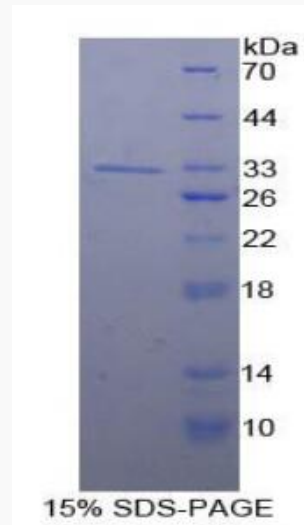
 Email: info@creative-biomart.com  Fax: 1-631-938-8127

 45-1 Ramsey Road, Shirley, NY 11967, USA



UniProt ID

Q99717



Tel: 1-631-559-9269 1-516-512-3133

Email: info@creative-biomart.com Fax: 1-631-938-8127

45-1 Ramsey Road, Shirley, NY 11967, USA