

Recombinant Full Length Human SMAD7 Protein, C-Flag-tagged

Cat. No. SMAD7-241HFL **Lot. No.** (See product label)

SPECIFICATION

Product Overview	Recombinant Full Length Human SMAD7 Protein, fused to Flag-tag at C-terminus, was expressed in Mammalian cells.
Species	Human
Source	Mammalian Cells
Description	The protein encoded by this gene is a nuclear protein that binds the E3 ubiquitin ligase SMURF2. Upon binding, this complex translocates to the cytoplasm, where it interacts with TGF-beta receptor type-1 (TGFBR1), leading to the degradation of both the encoded protein and TGFBR1. Expression of this gene is induced by TGFBR1. Variations in this gene are a cause of susceptibility to colorectal cancer type 3 (CRCS3). Several transcript variants encoding different isoforms have been found for this gene.
Form	25 mM Tris HCl, pH 7.3, 100 mM glycine, 10% glycerol.
Molecular Mass	46.2 kDa
AA Sequence	MFRTKRSALVRRLWRSRAPGGEDEEEGAGGGGGGGELRGEGATDSRAHGAGGG GPRAGCCLGKAVRGAK GHHPHPPPAAGAGAAGGAEADLKALTHSVLKKLKERQ LELLQAVESRGGTRTACL LLLPGR LDCRLGPGA PAGAQAQPSSSYSLPLLLCKVF RWPDLRHSSEVKRLCCCESYKINPELVCCNPHHLSRLCELESPPPP YSRYPMDFL KPTADCPDAVPSSAETGGTNYLAPGGLSDSQQLLLEPGDRSHWCVVAYWEEKTRVG

 Tel: 1-631-559-9269 1-516-512-3133

 Email: info@creative-biomart.com  Fax: 1-631-938-8127

 45-1 Ramsey Road, Shirley, NY 11967, USA

RLYCVQ EPSLDIFYDLPQQNGFCLGQLNSDNKSQLVQKVRISKIGCGIQLTREVDGV
 WVYNRSSYPIFIKSATLDNP DSRTLLVHKVFPGFSAIKAFDYEKAYSLQRPNDHEFMQ
 QPWTGFTVQISFVKGWGQCYTRQFISSCPCWLE
 VIFNSRTRTRPLEQKLISEEDLAANDILDYKDDDDKV

Purity > 80% as determined by SDS-PAGE and Coomassie blue staining.

Stability Stable for 12 months from the date of receipt of the product under proper storage and handling conditions. Avoid repeated freeze-thaw cycles.

Storage Store at -80 centigrade.

Concentration >50 ug/mL as determined by microplate BCA method.

Preparation Recombinant protein was captured through anti-DDK affinity column followed by conventional chromatography steps.

Protein Families Druggable Genome, Transcription Factors

Protein Pathways TGF-beta signaling pathway

Full Length Full L.

GENE INFORMATION

Gene Name SMAD7 SMAD family member 7 [Homo sapiens (human)]

Official Symbol SMAD7

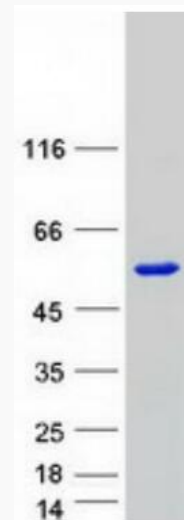
Synonyms CRCS3; MADH7; MADH8

 Tel: 1-631-559-9269 1-516-512-3133

 Email: info@creative-biomart.com  Fax: 1-631-938-8127

 45-1 Ramsey Road, Shirley, NY 11967, USA

Gene ID	4092
mRNA Refseq	NM_005904.4
Protein Refseq	NP_005895.1
MIM	602932
UniProt ID	O15105



Coomassie blue staining of purified SMAD7 protein.

Tel: 1-631-559-9269 1-516-512-3133

Email: info@creative-biomart.com Fax: 1-631-938-8127

45-1 Ramsey Road, Shirley, NY 11967, USA