

Recombinant Human SMAD9 Protein, His/GST-tagged

Cat. No. SMAD9-302H **Lot. No.** (See product label)

SPECIFICATION

Product Overview	Recombinant Human SMAD9(Thr226~Pro459) fused with His/GST tag at N-terminal was expressed in E. coli.
Species	Human
Source	E.coli
ProteinLength	Thr226~Pro459
Description	The protein encoded by this gene is a member of the SMAD family, which transduces signals from TGF-beta family members. The encoded protein is activated by bone morphogenetic proteins and interacts with SMAD4. Two transcript variants encoding different isoforms have been found for this gene.
Form	PBS, pH7.4, containing 0.01% SKL, 1mM DTT, 5% Trehalose and Proclin300.
Molecular Mass	58.7kDa
Endotoxin	<1.0EU per 1ug (determined by the LAL method)
Purity	> 95%
Applications	Positive Control; Immunogen; SDS-PAGE; WB. If bio-activity of the protein is needed, please check active protein

 Tel: 1-631-559-9269 1-516-512-3133

 Email: info@creative-biomart.com  Fax: 1-631-938-8127

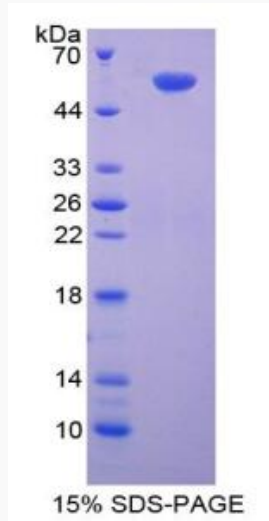
 45-1 Ramsey Road, Shirley, NY 11967, USA

Stability	The thermal stability is described by the loss rate. The loss rate was determined by accelerated thermal degradation test, that is, incubate the protein at 37 centigrade for 48h, and no obvious degradation and precipitation were observed. The loss rate is less than 5% within the expiration date under appropriate storage condition.
Storage	Avoid repeated freeze/thaw cycles. Store at 2-8 centigrade for one month. Aliquot and store at -80 centigrade for 12 months.
Reconstitution	Reconstitute in PBS or others
GENE INFORMATION	
Gene Name	SMAD9 SMAD family member 9 [Homo sapiens]
Official Symbol	SMAD9
Synonyms	SMAD9; SMAD family member 9; MAD, mothers against decapentaplegic homolog 9 (Drosophila) , MADH6, MADH9, SMAD, mothers against DPP homolog 9 (Drosophila); mothers against decapentaplegic homolog 9; MAD homolog 9; SMAD, mothers against DPP homolog 9; Mothers against decapentaplegic, drosophila, homolog of, 9; MADH6; MADH9; SMAD8; SMAD8A; SMAD8B;
Gene ID	4093
mRNA Refseq	NM_001127217
Protein Refseq	NP_001120689
MIM	603295
UniProt ID	O15198

 Tel: 1-631-559-9269 1-516-512-3133

 Email: info@creative-biomart.com  Fax: 1-631-938-8127

 45-1 Ramsey Road, Shirley, NY 11967, USA



Tel: 1-631-559-9269 1-516-512-3133

Email: info@creative-biomart.com Fax: 1-631-938-8127

45-1 Ramsey Road, Shirley, NY 11967, USA