

Recombinant Human SMAP1 Protein, MYC/DDK-tagged, C13 and N15-labeled

Cat. No. SMAP1-205H Lot. No. (See product label)

SPECIFICATION

Product Overview

SMAP1 MS Standard C13 and N15-labeled recombinant protein (NP_001037770) with a C-terminal MYC/DDK tag, was expressed in HEK293 cells.

Species

Human

Source

HEK293

Description

The protein encoded by this gene is similar to the mouse stromal membrane-associated protein-1. This similarity suggests that this human gene product is also a type II membrane glycoprotein involved in the erythropoietic stimulatory activity of stromal cells. Alternate splicing results in multiple transcript variants encoding different isoforms. [provided by RefSeq, Jul 2008]

Molecular Mass

50.4 kDa

AA Sequence

MATRSCREKAQKLNEQHQLILSKLLREEDNKYCADCEAKGPRWASWNIGVFCIRCA
GIHRNLGVHISRVKSVNLDQWTAEQIQCMQDMGNTKARLLYEANLPENFRRPQTDQ
AVEFFIRDKYEKKKYYDKNAIAITNISSDAPLQPLVSSPSLQAAVDKNKLEKEKEKKK
EEKKREKEPEKPAKPLTAEKLQKKDQQLEPKKSTSPKAAEPTVDLLGLDGPVAVPV
TNGNTTVPLNDDLDIFGPMISNPLPATVMPPAQGTPSAPAAATLSTVTSGDLDFTE
QTTKSEEVAKKQLSKDSILSLYGTGTIQQQSTPGVFMGPTNIPFTSQAPAAFQGFPS
MGVPVPAAPGLIGNVMGQSPSMMVGMPPNGFMGNAQTGVMLPQNVVGHQGG
MVGQMGAPQSKFGLPQAQQPQWSLSQMNQMQMAGMSISSATPTAGFGQPSSTTA

Tel: 1-631-559-9269 1-516-512-3133

Email: info@creative-biomart.com Fax: 1-631-938-8127

45-1 Ramsey Road, Shirley, NY 11967, USA

GWSGSSSGQTLSTQLWKTRTRPLEQKLISEEDLAANDILDYKDDDDKV

Purity > 80% as determined by SDS-PAGE and Coomassie blue staining

Stability Stable for 3 months from receipt of products under proper storage and handling conditions.

Storage Store at -80 centigrade. Avoid repeated freeze-thaw cycles.

Concentration 50 µg/mL as determined by BCA

Storage Buffer 100 mM glycine, 25 mM Tris-HCl, pH 7.3.

GENE INFORMATION

Gene Name [SMAP1 small ArfGAP 1 \[Homo sapiens \(human\) \]](#)

Official Symbol [SMAP1](#)

Synonyms SMAP1; small ArfGAP 1; stromal membrane associated GTPase activating protein 1, stromal membrane associated protein 1; stromal membrane-associated protein 1; FLJ13159; SMAP 1; stromal membrane-associated GTPase-activating protein 1; SMAP-1; FLJ42245;

Gene ID [60682](#)

mRNA Refseq [NM_001044305](#)

Protein Refseq [NP_001037770](#)

MIM [611372](#)

 Tel: 1-631-559-9269 1-516-512-3133

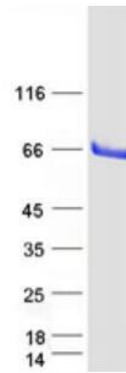
 Email: info@creative-biomart.com  Fax: 1-631-938-8127

 45-1 Ramsey Road, Shirley, NY 11967, USA

UniProt ID

Q8IYB5

SDS-PAGE



 Tel: 1-631-559-9269 1-516-512-3133

 Email: info@creative-biomart.com  Fax: 1-631-938-8127

 45-1 Ramsey Road, Shirley, NY 11967, USA