

# Recombinant Full Length Human SMARCA4 protein, His&FLAG-tagged

Cat. No. SMARCA4-01H Lot. No. (See product label)

## SPECIFICATION

<b>Product Overview</b>	Recombinant Full Length Human SMARCA4 protein with C-His&FLAG-tag was expressed in Baculovirus-Insect Cells.
<b>Species</b>	Human
<b>Source</b>	Insect Cells
<b>ProteinLength</b>	1-1647 aa
<b>Description</b>	Involved in transcriptional activation and repression of select genes by chromatin remodeling (alteration of DNA-nucleosome topology). Component of SWI/SNF chromatin remodeling complexes that carry out key enzymatic activities, changing chromatin structure by altering DNA-histone contacts within a nucleosome in an ATP-dependent manner.
<b>Molecular Mass</b>	186 kDa
<b>AA Sequence</b>	MSTPDPPLGGTTPRPGSPGPGSPGAMLGPSGSPGSAHSMMGSPSGPPSAGH PIPTQGPGGYPQDNMHQMHKPMESMHEKGMSSDDPRYNQMKGMGMRSGGHAGM GPPPSPMDQHSQGYPSPPLGGSEHASSVPASGPSSGPQMSSGPGGAPLDGADPQ ALGQQNRGPTPFNQNQLHQLRAQIMAYKMLARGQPLPDHLQMAVQGKRPMPPGMQ QQMPTLPPPSVSATGPGPGPGPGPGPGPAPPNYSRPHGMGGPNMPPPGPSG VPPGMPGQPPGGPPKPWPEGPMANAAAPTSTPQKLIPPQPTGRPSPAPPVPPAA SPVMPPQTQSPGQPAQPAPMVPLHQKQSRTPIQKPRGLDPVEILQEREYRLQARIA

 Tel: 1-631-559-9269 1-516-512-3133

 Email: [info@creative-biomart.com](mailto:info@creative-biomart.com)  Fax: 1-631-938-8127

 45-1 Ramsey Road, Shirley, NY 11967, USA

HRIQELENLPGSLAGDLRKTATIELKALRLLNFQRQLRQEVVCMRRDTALETALNAK  
 AYKRSKRQSLREARITEKLEKQQKIEQERKRRQKHQEYLNLSILQHAKDFKEYHRSVT  
 GKIQKLTAVATYHANTEREQKKENERIEKERMRRLMAEDEEGYRKLIDQKKDKRLA  
 YLLQQTDEYVANLTELVRQHKAQVAKEKKKKKKKKKAENAEGQTPAIGPDGEPLD  
 ETSQMSDLVPKVIHVESGKILTGTDAKAGQLEAWLEMNPGYEVAPRSDSEESGSE  
 EEEEEEEEQPQAAQPPTLPVEEKKKIPDPDSDVSEVDARHIIENAKQDVEDDEYGV  
 SQALARGLQSYAVAHAVTERVVKQSALMVNGVLKQYQIKGLEWLVSLYNNNLNGI  
 LADEMGLGKTIQTIALITYLMEHKRINGPFLIIVPLSTLSNWAYEFDKWAPSVVKVSYK  
 GSPAARRAFVPQLRSGKFNVLTTTYEYIIKDKHILAKIRWKYMIVDEGHRMKNHHCKL  
 TQVLNTHYVAPRLLLLTGTPLNKLPWALLNLLPTIFKSCSTFEQWFNAPFAMT  
 GEKVDLNEEETILIRRLHKVLRPFLRLKKEVEAQLPEKVEYVIKCDMSALQRVLYR  
 HMQAKGVLLTDGSEKDKKGGGTCTLMNTIMQLRKICNHPYMFQHIEESFSEHLGF  
 TGGIVQGLDLYRASGKFELDRILPKLRATNHKVLLFCQMTSLMTIMEDYFAYRQFKY  
 LRLDGTTKAEDRGMLLKTFNEPGSEYFIFLLSTRAGGLGLNLQSADTVIIFDSDWNPH  
 QDLQAQDRAHRIGQQNEVRVLRCTVNSVEEKILAAKYKLNVDQKVIQAGMFDQK  
 SSSHERRAFLQAILEHEEQDES RHCSTGSGSASFAHTAPPAGVNPDLPEEPLKEE  
 DEVPDDETVNQMIARHEEEFDLFMRMDLDRRREEARNPKRKPRLMEEDELPSWIIK  
 DDAEVERLTCEEEEEKMFGRGSRHRKEVDYSDSLTEKQWLKAIIEGTLEEIEEEVR  
 QKKSSRKRKRSDAGSSTPTTSTRSRDKDES KQKKRGRPPAEKLSNPPNLTK  
 KMKKIVDAVIKYKDS SGRQLSEVFIQLPSRKELPEYYELIRKPVDFKKIKERIRNHKY  
 RSLNDLEKDVMLLCQNAQTFNLEGLSIYEDSIVLQSVFTSVRQKIEKEDDSEGEESSE  
 EEEGEEGSESESRSVKVKIKLGRKEKAQDRKGGRRRPSRGRSRAKPVVSDDDSE  
 EEQEEDRSGSGSEEDHHHHHHHDYKDDDDK

**Storage**

Store it under sterile conditions at -20 to -80 centigrade. It is recommended that the protein be aliquoted for optimal storage. Avoid repeated freeze-thaw cycles.

**Storage Buffer**

Sterile 25mM Hepes, 0.1mM EDTA, 10% Glycerol, 350mM NaCl, pH7.6

**Concentration**

0.46 mg/mL by BCA

 Tel: 1-631-559-9269 1-516-512-3133

 Email: [info@creative-biomart.com](mailto:info@creative-biomart.com)  Fax: 1-631-938-8127

 45-1 Ramsey Road, Shirley, NY 11967, USA

## GENE INFORMATION

**Gene Name** SMARCA4 SWI/SNF related BAF chromatin remodeling complex subunit ATPase 4 [ Homo sapiens (human) ]

**Official Symbol** SMARCA4

**Synonyms** SMARCA4; SWI/SNF related, matrix associated, actin dependent regulator of chromatin, subfamily a, member 4; SNF2L4; transcription activator BRG1; ATP dependent helicase SMARCA4; BAF190; brahma protein like 1; BRG1; BRM/SWI2 related gene 1; FLJ39786; global transcription activator homologous sequence; homeotic gene regulator; hSNF2b; mitotic growth and transcription activator; nuclear protein GRB1; SNF2; SNF2 BETA; SNF2 like 4; SNF2LB; sucrose nonfermenting like 4; SWI2; BAF190A; SNF2-like 4; protein BRG-1; brahma protein-like 1; BRM/SWI2-related gene 1; protein brahma homolog 1; BRG1-associated factor 190A; sucrose nonfermenting-like 4; ATP-dependent helicase SMARCA4; SWI/SNF-related matrix-associated actin-dependent regulator of chromatin subfamily A member 4; RTPS2; SNF2-BETA;

**Gene ID** 6597

**mRNA Refseq** NM\_001128844

**Protein Refseq** NP\_001122316

**MIM** 603254

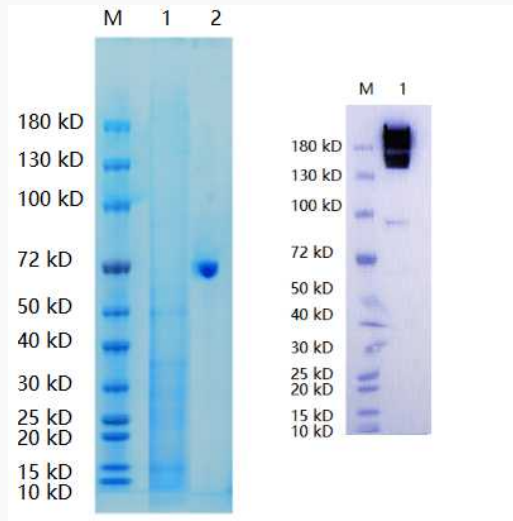
**UniProt ID** P51532

 Tel: 1-631-559-9269 1-516-512-3133

 Email: [info@creative-biomart.com](mailto:info@creative-biomart.com)  Fax: 1-631-938-8127

 45-1 Ramsey Road, Shirley, NY 11967, USA

**Reducing 12% SDS-PAGE (CBB stained) and WB (Anti-His Mouse Monoclonal Antibody) analysis profiles of purified SMARCA4.**



1. SMARCA4
2. BSA

 Tel: 1-631-559-9269 1-516-512-3133

 Email: [info@creative-biomart.com](mailto:info@creative-biomart.com)  Fax: 1-631-938-8127

 45-1 Ramsey Road, Shirley, NY 11967, USA