

## Recombinant Human SMARCA4 protein, His-tagged

Cat. No. SMARCA4-5521H Lot. No. (See product label)

### SPECIFICATION

<b>Product Overview</b>	Recombinant Human SMARCA4 protein(P51532)(700-1246aa), fused to N-terminal His tag, was expressed in Yeast.
<b>Species</b>	Human
<b>Source</b>	Yeast
<b>ProteinLength</b>	700-1246aa
<b>Form</b>	If the delivery form is liquid, the default storage buffer is Tris/PBS-based buffer, 5%-50% glycerol. If the delivery form is lyophilized powder, the buffer before lyophilization is Tris/PBS-based buffer, 6% Trehalose, pH 8.0.
<b>Molecular Mass</b>	64.8 kDa
<b>Purity</b>	Greater than 90% as determined by SDS-PAGE.
<b>Storage</b>	Store at -20°C/-80°C upon receipt, aliquoting is necessary for mutiple use. Avoid repeated freeze-thaw cycles.
<b>Reconstitution</b>	Please reconstitute protein in deionized sterile water to a concentration of 0.1-1.0 mg/mL. We recommend to add 5-50% of glycerol (final concentration) and aliquot for long-term storage at -20°C/-80°C. Our default final concentration of glycerol is 50%.

### GENE INFORMATION

 Tel: 1-631-559-9269 1-516-512-3133

 Email: [info@creative-biomart.com](mailto:info@creative-biomart.com)  Fax: 1-631-938-8127

 45-1 Ramsey Road, Shirley, NY 11967, USA

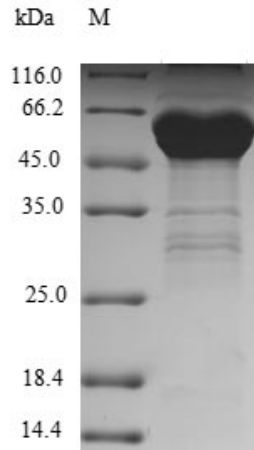
<b>Gene Name</b>	SMARCA4 SWI/SNF related, matrix associated, actin dependent regulator of chromatin, subfamily a, member 4 [ Homo sapiens ]
<b>Official Symbol</b>	SMARCA4
<b>Synonyms</b>	SMARCA4; SWI/SNF related, matrix associated, actin dependent regulator of chromatin, subfamily a, member 4; SNF2L4; transcription activator BRG1; ATP dependent helicase SMARCA4; BAF190; brahma protein like 1; BRG1; BRM/SWI2 related gene 1; FLJ39786; global transcription activator homologous sequence; homeotic gene regulator; hSNF2b; mitotic growth and transcription activator; nuclear protein GRB1; SNF2; SNF2 BETA; SNF2 like 4; SNF2LB; sucrose nonfermenting like 4; SWI2; BAF190A; SNF2-like 4; protein BRG-1; brahma protein-like 1; BRM/SWI2-related gene 1; protein brahma homolog 1; BRG1-associated factor 190A; sucrose nonfermenting-like 4; ATP-dependent helicase SMARCA4; SWI/SNF-related matrix-associated actin-dependent regulator of chromatin subfamily A member 4; RTPS2; SNF2-BETA;
<b>Gene ID</b>	6597
<b>mRNA Refseq</b>	NM_001128844
<b>Protein Refseq</b>	NP_001122316
<b>MIM</b>	603254
<b>UniProt ID</b>	P51532

 Tel: 1-631-559-9269 1-516-512-3133

 Email: [info@creative-biomart.com](mailto:info@creative-biomart.com)  Fax: 1-631-938-8127

 45-1 Ramsey Road, Shirley, NY 11967, USA

**SDS-PAGE**



 Tel: 1-631-559-9269 1-516-512-3133

 Email: [info@creative-biomart.com](mailto:info@creative-biomart.com)  Fax: 1-631-938-8127

 45-1 Ramsey Road, Shirley, NY 11967, USA