

## Recombinant Human SMARCC1 Protein (449-669 aa), His-SUMO-tagged

**Cat. No.** SMARCC1-1068H    **Lot. No.** (See product label)

### SPECIFICATION

<b>Product Overview</b>	Recombinant Human SMARCC1 Protein (449-669 aa) is produced by E. coli expression system. This protein is fused with a 6xHis-SUMO tag at the N-terminal. Research Area: Neuroscience. Protein Description: Partial.
<b>Species</b>	Human
<b>Source</b>	E.coli
<b>ProteinLength</b>	449-669 aa
<b>Description</b>	Involved in transcriptional activation and repression of select genes by chromatin rodeling (alteration of DNA-nucleosome topology). May stimulate the ATPase activity of the catalytic subunit of the complex. Belongs to the neural progenitors-specific chromatin rodeling complex (npBAF complex) and the neuron-specific chromatin rodeling complex (nBAF complex). During neural development a switch from a st/progenitor to a post-mitotic chromatin rodeling mechanism occurs as neurons exit the cell cycle and become committed to their adult state. The transition from proliferating neural st/progenitor cells to post-mitotic neurons requires a switch in subunit composition of the npBAF and nBAF complexes. As neural progenitors exit mitosis and differentiate into neurons, npBAF complexes which contain ACTL6A/BAF53A and PHF10/BAF45A, are exchanged for homologous alternative ACTL6B/BAF53B and DPF1/BAF45B or DPF3/BAF45C subunits in neuron-specific complexes (nBAF). The npBAF complex is essential for the self-renewal/proliferative

 Tel: 1-631-559-9269    1-516-512-3133

 Email: [info@creative-biomart.com](mailto:info@creative-biomart.com)     Fax: 1-631-938-8127

 45-1 Ramsey Road, Shirley, NY 11967, USA

	capacity of the multipotent neural st cells. The nBAF complex along with CREST plays a role regulating the activity of genes essential for dendrite growth.
<b>Form</b>	Tris-based buffer, 50% glycerol
<b>Molecular Mass</b>	41.4 kDa
<b>AA Sequence</b>	IIIPSYASWFDYNCIHVIERRALPEFFNGKNKSKTPEIYLAYRNF MIDTYRLNPQEYLTS TACRRNLTGDVCAVMRVHAFLEQWGLVNYQVDPESRPMAMGPPPTPHFNVLADTP SGLVPLHLRSPQVPAAQQMLNFPEKNKEKPVDLQNFGLRDTDIYSKKTAKSKGASA GREWTEQETLLLLLEALEMYKDDWNKVSEHVGSRTQDECILHFLRLPIEDP
<b>Purity</b>	> 90% as determined by SDS-PAGE.
<b>Notes</b>	Repeated freezing and thawing is not recommended. Store working aliquots at 4 centigrade for up to one week.
<b>Storage</b>	The shelf life is related to many factors, storage state, buffer ingredients, storage temperature and the stability of the protein itself. Generally, the shelf life of liquid form is 6 months at -20 centigrade/-80 centigrade. The shelf life of lyophilized form is 12 months at -20 centigrade/-80 centigrade.
<b>Concentration</b>	A hardcopy of COA with concentration instruction is sent along with the products.

## GENE INFORMATION

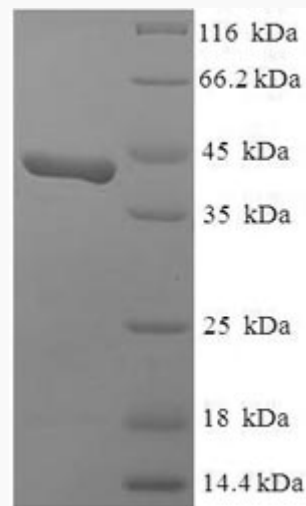
<b>Gene Name</b>	SMARCC1 SWI/SNF related, matrix associated, actin dependent regulator of chromatin, subfamily c, member 1 [ Homo sapiens ]
<b>Official Symbol</b>	SMARCC1

 Tel: 1-631-559-9269 1-516-512-3133

 Email: [info@creative-biomart.com](mailto:info@creative-biomart.com)  Fax: 1-631-938-8127

 45-1 Ramsey Road, Shirley, NY 11967, USA

<b>Synonyms</b>	SMARCC1; BAF155; CRACC1; Rsc8; SRG3; SWI3;
<b>Gene ID</b>	<a href="#">6599</a>
<b>mRNA Refseq</b>	<a href="#">NM_003074</a>
<b>Protein Refseq</b>	<a href="#">NP_003065</a>
<b>MIM</b>	<a href="#">601732</a>
<b>UniProt ID</b>	<a href="#">Q92922</a>



(Tris-Glycine gel) Discontinuous SDS-PAGE (reduced) with 5% enrichment gel and 15% separation gel.

 Tel: 1-631-559-9269 1-516-512-3133

 Email: [info@creative-biomart.com](mailto:info@creative-biomart.com)  Fax: 1-631-938-8127

 45-1 Ramsey Road, Shirley, NY 11967, USA