

Recombinant Human SMCP Protein, GST-tagged

Cat. No. SMCP-4509H **Lot. No.** (See product label)

SPECIFICATION

Product Overview	Human MCSP full-length ORF (AAH14593, 1 a.a. - 116 a.a.) recombinant protein with GST-tag at N-terminal.
Species	Human
Source	Wheat Germ
Description	Sperm mitochondria differ in morphology and subcellular localization from those of somatic cells. They are elongated, flattened, and arranged circumferentially to form a helical coiled sheath in the midpiece of the sperm flagellum. The protein encoded by this gene localizes to the capsule associated with the mitochondrial outer membranes and is thought to function in the organization and stabilization of the helical structure of the sperms mitochondrial sheath. [provided by RefSeq]
Molecular Mass	38.50 kDa
AA Sequence	MCDQTKHSKCCPAKGNQCCPPQQNQCCQSKGNQCCPPKQNQCCQPKGSQCCP PKHNHCCQPKPPCCIARCCGLETKPEVSPLNMESEPNSPQTQDKGCQTQQQPHS PQNESRPSK
Applications	Enzyme-linked Immunoabsorbent Assay Western Blot (Recombinant protein) Antibody Production Protein Array

 Tel: 1-631-559-9269 1-516-512-3133

 Email: info@creative-biomart.com  Fax: 1-631-938-8127

 45-1 Ramsey Road, Shirley, NY 11967, USA

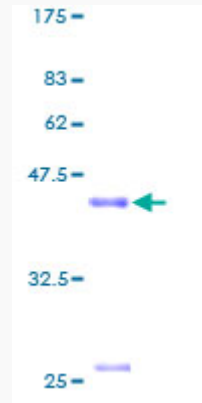
Notes	Best use within three months from the date of receipt of this protein.
Storage	Store at -80 centigrade. Aliquot to avoid repeated freezing and thawing.
Storage Buffer	50 mM Tris-HCl, 10 mM reduced Glutathione, pH=8.0 in the elution buffer.
GENE INFORMATION	
Gene Name	SMCP sperm mitochondria-associated cysteine-rich protein [Homo sapiens]
Official Symbol	SMCP
Synonyms	SMCP; sperm mitochondria-associated cysteine-rich protein; MCSP, mitochondrial capsule selenoprotein; sperm mitochondrial-associated cysteine-rich protein; mitochondrial capsule selenoprotein; MCS; MCSP; HSMCSGEN1; MGC26305; MGC26519;
Gene ID	4184
mRNA Refseq	NM_030663
Protein Refseq	NP_109588
MIM	601148
UniProt ID	P49901

 Tel: 1-631-559-9269 1-516-512-3133

 Email: info@creative-biomart.com  Fax: 1-631-938-8127

 45-1 Ramsey Road, Shirley, NY 11967, USA

**Quality Control
Testing**



12.5% SDS-PAGE Stained with Coomassie Blue

 Tel: 1-631-559-9269 1-516-512-3133

 Email: info@creative-biomart.com  Fax: 1-631-938-8127

 45-1 Ramsey Road, Shirley, NY 11967, USA