

Recombinant Human SMOC1 Protein, His&GST-tagged

Cat. No. SMOC1-2085H Lot. No. (See product label)

SPECIFICATION

Product Overview	Recombinant Human SMOC1 Protein (His27-Val434) with N-His&GST tag was expressed in E. coli.
Species	Human
Source	E.coli
ProteinLength	His27-Val434
Description	This gene encodes a multi-domain secreted protein that may have a critical role in ocular and limb development. Mutations in this gene are associated with microphthalmia and limb anomalies. Alternatively spliced transcript variants encoding different isoforms have been found for this gene.
Form	Freeze-dried powder
Molecular Mass	Predicted Molecular Mass: 75 kDa Accurate Molecular Mass: 83 kDa
Purity	> 90%
Applications	Positive Control; Immunogen; SDS-PAGE; WB.
Stability	The thermal stability is described by the loss rate. The loss rate was determined by accelerated thermal degradation test, that is, incubate the protein at 37 centigrade for

 Tel: 1-631-559-9269 1-516-512-3133

 Email: info@creative-biomart.com  Fax: 1-631-938-8127

 45-1 Ramsey Road, Shirley, NY 11967, USA

48h, and no obvious degradation and precipitation were observed. The loss rate is less than 5% within the expiration date under appropriate storage condition.

Storage

Avoid repeated freeze/thaw cycles. Store at 2-8 centigrade for one month. Aliquot and store at -80 centigrade for 12 months.

Storage Buffer

20mM Tris, 150mM NaCl, pH8.0, containing 1mM EDTA, 1mM DTT, 0.01% SKL, 5% Trehalose and Proclin300.

Reconstitution

Reconstitute in 20mM Tris, 150mM NaCl (pH8.0) to a concentration of 0.1-1.0 mg/mL. Do not vortex.

GENE INFORMATION

Gene Name

[SMOC1 SPARC related modular calcium binding 1 \[Homo sapiens \(human\) \]](#)

Official Symbol

[SMOC1](#)

Synonyms

SMOC1; SPARC related modular calcium binding 1; SPARC-related modular calcium-binding protein 1; secreted modular calcium-binding protein 1; OAS;

Gene ID

[64093](#)

mRNA Refseq

[NM_001034852](#)

Protein Refseq

[NP_001030024](#)

MIM

[608488](#)

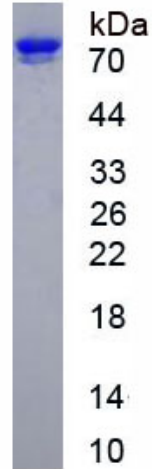
UniProt ID

[Q9H4F8](#)

 Tel: 1-631-559-9269 1-516-512-3133

 Email: info@creative-biomart.com  Fax: 1-631-938-8127

 45-1 Ramsey Road, Shirley, NY 11967, USA



Tel: 1-631-559-9269 1-516-512-3133

Email: info@creative-biomart.com Fax: 1-631-938-8127

45-1 Ramsey Road, Shirley, NY 11967, USA