

Recombinant Mouse SMPD1 protein, His-tagged

Cat. No. SMPD1-1263M Lot. No. (See product label)

SPECIFICATION

Product Overview	Recombinant Mouse SMPD1 protein(Tyr58~Leu626), fused with N-terminal His Tag, was expressed in HEK293.
Species	Mouse
Source	HEK293
ProteinLength	Tyr58~Leu626
Form	PBS, pH7.4, containing 0.01% SKL, 1mM DTT, 5% Trehalose and Proclin300.
Molecular Mass	75kDa
Endotoxin	<1.0EU per 1g (determined by the LAL method)
Purity	> 95%
Storage	Avoid repeated freeze/thaw cycles. Store at 2-8°C for one month. Aliquot and store at -80°C for 12 months.
Reconstitution	Reconstitute in 10mM PBS (pH7.4) to a concentration of 0.1-1.0 mg/mL. Do not vortex.

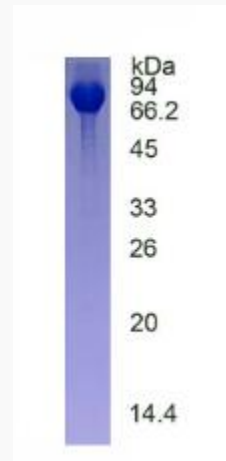
GENE INFORMATION

 Tel: 1-631-559-9269 1-516-512-3133

 Email: info@creative-biomart.com  Fax: 1-631-938-8127

 45-1 Ramsey Road, Shirley, NY 11967, USA

Gene Name	Smpd1 sphingomyelin phosphodiesterase 1, acid lysosomal [<i>Mus musculus</i>]
Official Symbol	SMPD1
Synonyms	SMPD1; sphingomyelin phosphodiesterase 1, acid lysosomal; sphingomyelin phosphodiesterase; acid sphingomyelinase; ASM; aSMase; A-SMase; Zn-SMase;
Gene ID	20597
mRNA Refseq	NM_011421
Protein Refseq	NP_035551

SDS-PAGE


 Tel: 1-631-559-9269 1-516-512-3133

 Email: info@creative-biomart.com  Fax: 1-631-938-8127

 45-1 Ramsey Road, Shirley, NY 11967, USA