

Recombinant Human SMPD1 Protein, Myc/DDK-tagged, C13 and N15-labeled

Cat. No. SMPD1-3678H Lot. No. (See product label)

SPECIFICATION

Product Overview

SMPD1 MS Standard C13 and N15-labeled recombinant protein (NP_000534) with a C-terminal MYC/DDK tag, was expressed in HEK293 cells.

Species

Human

Source

HEK293

Description

The protein encoded by this gene is a lysosomal acid sphingomyelinase that converts sphingomyelin to ceramide. The encoded protein also has phospholipase C activity. Defects in this gene are a cause of Niemann-Pick disease type A (NPA) and Niemann-Pick disease type B (NPB). Multiple transcript variants encoding different isoforms have been identified.

Molecular Mass

69.94 kDa

AA Sequence

MPRYGASLRQSCPRSGREQGQDGTAGAPGLLWMGLVLALALALALALS DSRVL
 WAPAEAHPLSPQGHPARLHRIVPRLRDVFGWGNLTCPICKGLFTAINLGLKKEPNVA
 RVGSVAIKLCNLLKIAPPAVCQSI VHLFEDDMVEVWRRSVLSPSEACGLLLGSTCGH
 WDIFSSWNISLPTVPKPPKPPSPPAPGAPVSRILFLTDLHWDHDYLEGTDPCADP
 LCCRGRGSLPPASRPGAGYWGGEYSKCDLPLRTLLESLLSGLGPAGPFDMVYWTGDI
 PAHDVWHQTRQDQLRALTTVTALVRKFLGPVPVYPAVGNHESTPVNSFPPPFIEGN
 HSSRWLYEAMAKAWEPWLP AEALRTL RIGGFYALSPYPGLRLISLNMNFCSRENFW
 LLINSTDPAGQLQWL VGELQAAEDRGDKVHIIGHIPP GHCLKSWSWNYYRIVARYEN

Tel: 1-631-559-9269 1-516-512-3133

Email: info@creative-biomart.com Fax: 1-631-938-8127

45-1 Ramsey Road, Shirley, NY 11967, USA

TLAAQFFGHTHVDEFEVFYDEETLSRPLAVAFLAPSATTYIGLNPGYRVYQIDGNYS
 GSSHVVLDHETYILNLTQANIPGAIPHWQLLYRARETYGLPNTLPTAWHNLVYRMRG
 DMQLFQTFWFLYHKGHPPSEPCGTPCRLATLCAQLSARADSPALCRHLMPSGLP
 EAQSLWPRPLFCTRTRPLEQKLISEEDLAANDILDYKDDDDKV

Purity > 80% as determined by SDS-PAGE and Coomassie blue staining

Stability Stable for 3 months from receipt of products under proper storage and handling conditions.

Storage Store at -80 centigrade. Avoid repeated freeze-thaw cycles.

Concentration 50 µg/mL as determined by BCA

Storage Buffer 100 mM glycine, 25 mM Tris-HCl, pH 7.3.

GENE INFORMATION

Gene Name SMPD1 sphingomyelin phosphodiesterase 1 [Homo sapiens (human)]

Official Symbol SMPD1

Synonyms SMPD1; sphingomyelin phosphodiesterase 1, acid lysosomal; sphingomyelin phosphodiesterase; acid sphingomyelinase; ASM; NPD; ASMASE;

Gene ID 6609

mRNA Refseq NM_000543

Protein Refseq NP_000534

 Tel: 1-631-559-9269 1-516-512-3133

 Email: info@creative-biomart.com  Fax: 1-631-938-8127

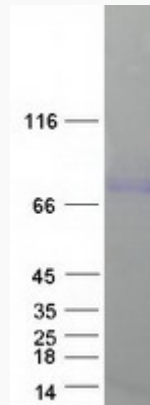
 45-1 Ramsey Road, Shirley, NY 11967, USA



MIM 607608

UniProt ID P17405

SDS-PAGE



Tel: 1-631-559-9269 1-516-512-3133

Email: info@creative-biomart.com Fax: 1-631-938-8127

45-1 Ramsey Road, Shirley, NY 11967, USA