

Recombinant Human SMPD1 protein, His-SUMO-tagged

Cat. No. SMPD1-5332H Lot. No. (See product label)

SPECIFICATION

Product Overview	Recombinant Human SMPD1 protein(P17405)(47-631aa), fused with N-terminal His and SUMO tag, was expressed in E.coli.
Species	Human
Source	E.coli
ProteinLength	47-631a.a.
Tag	His&SUMO
Form	If the delivery form is liquid, the default storage buffer is Tris/PBS-based buffer, 5%-50% glycerol. If the delivery form is lyophilized powder, the buffer before lyophilization is Tris/PBS-based buffer, 6% Trehalose, pH 8.0.
Molecular Mass	78.2 kDa
Purity	Greater than 90% as determined by SDS-PAGE.
Storage	Store at -20°C/-80°C upon receipt, aliquoting is necessary for mutiple use. Avoid repeated freeze-thaw cycles.
Reconstitution	We recommend that this vial be briefly centrifuged prior to opening to bring the contents to the bottom. Please reconstitute protein in deionized sterile water to a concentration of 0.1-1.0 mg/mL.We recommend to add 5-50% of glycerol (final

 Tel: 1-631-559-9269 1-516-512-3133

 Email: info@creative-biomart.com  Fax: 1-631-938-8127

 45-1 Ramsey Road, Shirley, NY 11967, USA

concentration) and aliquot for long-term storage at -20°C/-80°C.

AA Sequence

LALSDSRVLWAPAEAHPLSPQGHPARLHRIVPRLRDVFGWGNLTCPICKGLFTAINL
 GLKKEPNVARVGSVAIKLCNLLKIAPAVCQSIVHLFEDDMVEVWRRSVLSPSEACG
 LLLGSTCGHWDIFSSWNISLPTVPKPPPSPAPGAPVSRILFLTDLHWDHDYLE
 GTDPDCADPLCCRRGSGLPASRPGAGYWGEYSKCDLPLRTLLESLLSGLGPAGPF
 DMVYWTGDIPAHDVWHQTRQDQLRALTTVTALVRKFLGPVPVYPAVGNHSTPVN
 SFPPPIEGNHSSRWLYEAMAKAWEPWLP AEALRTL RIGGFYALSPYPGLRLISLNM
 NFCSRENFWLLINSTDPAGQLQWLVGELQAAEDRGDKVHIIGHIPPGHCLKSWSWN
 YYRIVARYENTLAAQFFGHTHVDEFEVFYDEETLSRPLAVAFLAPSATTYIGLNPGYR
 VYQIDGNYSGSSHVLDHETYILNLTQANIPGAIPHWQLLYRARETYGLPNTLPTAW
 HNLVYRMRGDMQLFQTFWFLYHKGHPSEPCGTPCRLATLCAQLSARADSPALCR
 HLMPDGSLPEAQLWPRPLFC

GENE INFORMATION

Gene Name SMPD1 sphingomyelin phosphodiesterase 1, acid lysosomal [Homo sapiens]

Official Symbol SMPD1

Synonyms SMPD1; sphingomyelin phosphodiesterase 1, acid lysosomal; sphingomyelin phosphodiesterase; acid sphingomyelinase; ASM; NPD; ASMASE;

Gene ID 6609


mRNA Refseq NM_000543

Protein Refseq NP_000534

MIM 607608

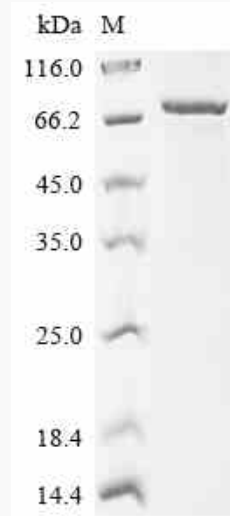
 Tel: 1-631-559-9269 1-516-512-3133

 Email: info@creative-biomart.com  Fax: 1-631-938-8127

 45-1 Ramsey Road, Shirley, NY 11967, USA

UniProt ID P17405

SDS-PAGE



 Tel: 1-631-559-9269 1-516-512-3133

 Email: info@creative-biomart.com  Fax: 1-631-938-8127

 45-1 Ramsey Road, Shirley, NY 11967, USA