

Active Recombinant Human SMPD1 protein, His-tagged

Cat. No. SMPD1-537H Lot. No. (See product label)

SPECIFICATION

| | |
|-------------------------|--|
| Product Overview | Active Recombinant Human SMPD1 protein(NP_000534.3)(Met1-Pro628) is expressed from Baculovirus-Insect Cells(Sf9) with His tag at the C-terminus. |
| Species | Human |
| Source | Insect Cells(Sf9) |
| ProteinLength | 1-628 aa |
| Form | Supplied as 0.22 µm filtered solution in 20mM Tris, 500mM NaCl, 25% glycerol (pH 7.5). |
| Bio-activity | Measured by its ability to cleave 2-N-Hexadecanoylamino-4-nitrophenylphosphorylcholine (HNPPC). The specific activity is > 1500 pmol/min/µg. |
| Molecular Mass | The protein has a predicted MW of 66.53 kDa. Due to glycosylation, the protein migrates to 67-70 kDa based on Bis-Tris PAGE result. |
| Endotoxin | Less than 1 EU per µg by the LAL method. |
| Purity | > 95% as determined by Bis-Tris PAGE > 95% as determined by HPLC |
| Storage | Valid for 12 months from date of receipt when stored at -80°C. Recommend to aliquot the protein into smaller quantities for optimal storage. Please minimize freeze-thaw cycles. |

 Tel: 1-631-559-9269 1-516-512-3133

 Email: info@creative-biomart.com  Fax: 1-631-938-8127

 45-1 Ramsey Road, Shirley, NY 11967, USA

| | |
|-------------------------------|---|
| Concentration | 0.2 ug/ul |
| protein Refseq-Weblink | http://www.ncbi.nlm.nih.gov/protein/NP_000534.3 |
| Unit ID | P17405 |
| Unit ID-Weblink | https://www.uniprot.org/uniprotkb/P17405 |

GENE INFORMATION

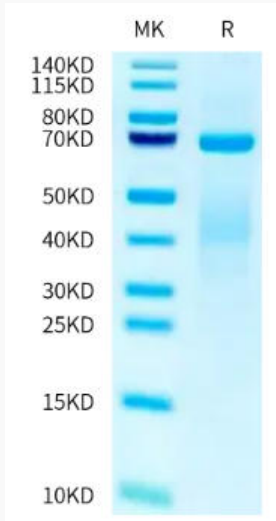
| | |
|------------------------|---|
| Gene Name | SMPD1 sphingomyelin phosphodiesterase 1, acid lysosomal [Homo sapiens] |
| Official Symbol | SMPD1 |
| Synonyms | SMPD1; sphingomyelin phosphodiesterase 1, acid lysosomal; sphingomyelin phosphodiesterase; acid sphingomyelinase; ASM; NPD; ASMASE; |
| Gene ID | 6609 |
| mRNA Refseq | NM_000543 |
| protein Refseq | NP_000534 |
| MIM | 607608 |

 Tel: 1-631-559-9269 1-516-512-3133

 Email: info@creative-biomart.com  Fax: 1-631-938-8127

 45-1 Ramsey Road, Shirley, NY 11967, USA

Bis-Tris PAGE



 Tel: 1-631-559-9269 1-516-512-3133

 Email: info@creative-biomart.com  Fax: 1-631-938-8127

 45-1 Ramsey Road, Shirley, NY 11967, USA