

Active Recombinant Human SMPD1 protein, His-tagged

Cat. No. SMPD1-611H Lot. No. (See product label)

SPECIFICATION

Product Overview Recombinant Human SMPD1 protein(His62~Pro628), fused with His tag, was expressed in HEK293.

Species Human

Source HEK293

ProteinLength His62~Pro628

Form PBS, pH7.4, containing 5% trehalose.

Bio-activity Sphingomyelin phosphodiesterase 1 (SMPD1), also known as acid sphingomyelinase (ASM), belongs to the sphingomyelin phosphodiesterase family. The protein Converts sphingomyelin to ceramide. ASM also has phospholipase C activities toward 1,2-diacylglycerolphosphocholine and 1,2-diacylglycerolphosphoglycerol. Thus, the recombinant human ASM activity was measured by its ability to hydrolyze 2-N-Hexadecanoyl amino-4-nitrophenylphosphorylcholine (HDA-PC) to p-Nitrophenol. The reaction was performed in 50 mM MES, 0.5 mM ZnCl₂, pH 7.5(Assay Buffer), initiated by addition 50 μL of various concentrations of ASM(diluted with Assay Buffer) to 50 μ of 1 mM Substrate HDA-PC (50 mM stocksolution in methanol, diluted with Assay Buffer). Incubated at room temperature for 20 minutes in the dark, then read at a wavelength of 405 nm.

Molecular Mass 75kDa

 Tel: 1-631-559-9269 1-516-512-3133

 Email: info@creative-biomart.com  Fax: 1-631-938-8127

 45-1 Ramsey Road, Shirley, NY 11967, USA

Endotoxin	<1.0EU per 1g (determined by the LAL method)
Purity	> 95%
Storage	Avoid repeated freeze/thaw cycles. Store at 2-8°C for one month. Aliquot and store at -80°C for 12 months.
Reconstitution	Reconstitute in 10mM PBS (pH7.6) to a concentration of 0.1-1.0 mg/mL. Do not vortex.

GENE INFORMATION

Gene Name	SMPD1 sphingomyelin phosphodiesterase 1, acid lysosomal [Homo sapiens]
Official Symbol	SMPD1
Synonyms	SMPD1; sphingomyelin phosphodiesterase 1, acid lysosomal; sphingomyelin phosphodiesterase; acid sphingomyelinase; ASM; NPD; ASMASE
Gene ID	6609
mRNA Refseq	NM_000543
Protein Refseq	NP_000534
MIM	607608
UniProt ID	P17405

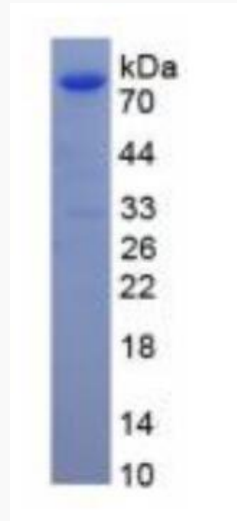
 Tel: 1-631-559-9269 1-516-512-3133

 Email: info@creative-biomart.com  Fax: 1-631-938-8127

 45-1 Ramsey Road, Shirley, NY 11967, USA



SDS-PAGE



Tel: 1-631-559-9269 1-516-512-3133

Email: info@creative-biomart.com Fax: 1-631-938-8127

45-1 Ramsey Road, Shirley, NY 11967, USA